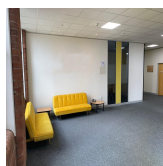


# Serviced Office Space UK

## Dowry Street

### Oldham OL8 2PF



The centre is based just outside of Oldham, around a five-minute drive (20-minute walk) from the town's centre. Thus, tenants will have quick access on a lunchtime and post-work to take advantage of all the town has to offer, including a wide range of eateries, drinking holes and shops. In terms of transport, Oldham is famous for not having a train station however the centre is just a five-minute drive from the M60 Manchester Ring Road motorway – ideal for drivers. The M60 facilitates access to Manchester city centre – a great resource for those who may have business meetings in the city – and gives tenants access to Liverpool and Leeds via the M62.

Based in Oldham and housed in a historic textile mill dating back to 1863, this centre has undergone a fantastic transformation and now offers first rate business space. The centre is composed of over 200,000sqft and is an exciting proposition whether you are a start-up looking for your first home, or a more established company looking for new surroundings. The centre benefits from full IT connectivity and ultra-fast fibre internet. All suites have lots of natural light and tenants will have 24 hour access. The centre also has a manned reception area and postal service, breakout space, kitchen facilities and meeting and conference rooms. Tenants also have the opportunity to have their space customised and bespoke to your brand.

## transport links

Underground	N/A
Train Station	Manchester Piccadilly
Road Link	N/A
Airport	Royal Travel

## Virtual Office

- **Price** : £40 pcm
- **Min Price** : £40 pcm
- **Min Term** : 6 mnths
- **Max Term** : 60 mnths