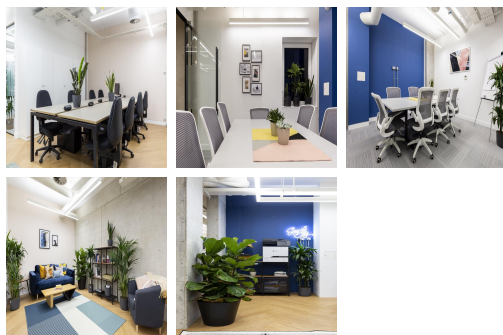
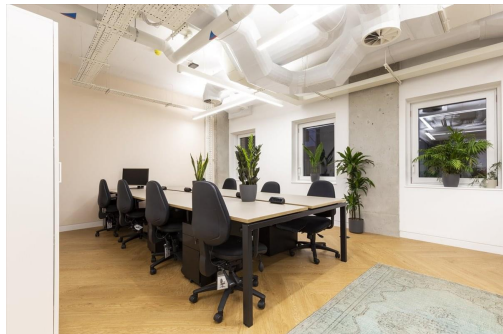


# Serviced Office Space UK

---

## London N1 7GR



The centre is set in the heart of Hoxton, an area with a history of creativity and eccentricity. The area is one of the most distinctive within the capital, where the historic perfectly blends with the contemporary, and tenants will find an abundance of high quality eateries, drinking holes and cafes. The centre also overlooks Wenlock Basin, which offers a lovely setting for your working day. In terms of transport, the centre is around a 10-minute walk to both Angel and Old Street underground stations – both based on the Northern line. Alternatively, Hoxton overground station is around a 20-minute walk.

Based in the creative community of Hoxton, this centre offers an exciting space that comes fully furnished. The spacious, ground floor office benefits from an abundance of natural, creating a productive, light working environment which will allow you to thrive in. The centre has a well equipped, private meeting room – an ideal place to hold team meetings or host clients. The space is also accessible 24 hours a day, meaning you can set your own working schedule and stay late if needs be. Other amenities include fine kitchen facilities equipped with fridge and Nespresso machine; air conditioning; bike racks; dedicated breakout space; copying and printing facilities and WiFi.

### transport links

<b>Underground</b>	Angel
<b>Train Station</b>	Liverpool Street Station
<b>Road Link</b>	N/A
<b>Airport</b>	London City Airport

### Serviced Offices

---

- **Price** : Â£250 pcm
- **Min Price** : Â£250 pcm