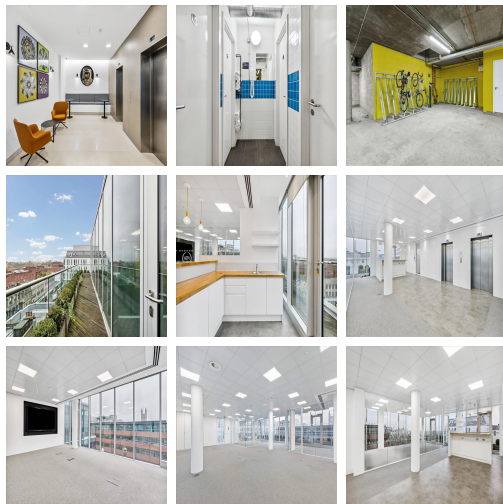


Serviced Office Space UK

London W6 0EA



The space is situated in the heart of Hammersmith directly opposite the Hammersmith and Circle Line Underground station and within 150 metres of Centre West (Bus, Piccadilly and District Line Underground interchange) overlooking The Broadway and Lyric Square. Heathrow Airport is 10 miles away from this business centre. Tenants and their teams are placed in an easily accessible and well-connected location. In the immediate vicinity, there is everything that the city lives restaurants, cafes, shopping centres, and hotels.

This business centre is located in the heart of Hammersmith and part of Romulus' Hammersmith Campus, the centre provides quality workspace arranged over six floors with a fully staffed ground floor reception. This business centre provides fully furnished offices with high-speed internet, parking space, meeting space, professional-grade daily cleaning services, IT support and telecom services, kitchen facilities, and much more. The centre is accessible 24 hours a day so the clients can work flexibly. This business centre is the leading workspace provider with multiple office solutions for every business.

transport links

Underground	Hammersmith Station
Train Station	Victoria Station
Road Link	N/A
Airport	Heathrow Airport

Leased Spaces

- **Price** : Â£4 pcm
- **Min Price** : Â£4 pcm
- **Min Size** : 1 sq ft
- **Max Size** : 44 sq ft
- **Total Size** : 6179 sq ft
- **Min Term** : 12 mnths
- **Max Term** : 60 mnths