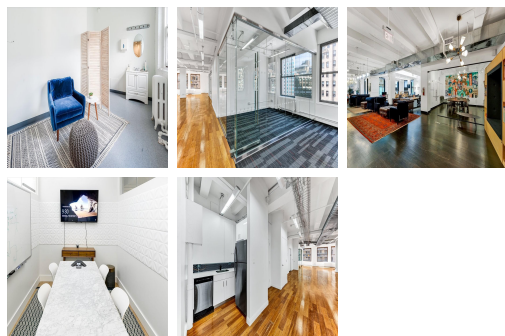
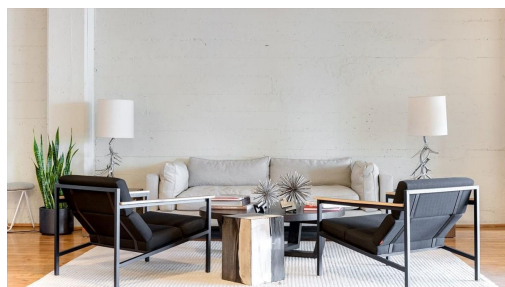


Serviced Office Space UK

45 Whitfield Street

London W1T 4HD



In terms of transport, this centre benefits from close proximity to a number of underground stations. Goodge Street station is just minutes away, offering direct access to the Northern line. Warren Street, Euston Square, Tottenham Court Road and Oxford Circus stations are all within a ten-minute walk, providing access to a multitude of tube lines. The area is filled with a great range of eateries, drinking holes, shops and independent cafes to enjoy when out of the office or when entertaining clients.

This centre offers a unique and exciting opportunity to businesses that want to tailor their office space so that it fits in with their brand identity. The full floor office space is fully customisable, delivering a bespoke solution that meets your company's exact requirements. The rent is inclusive of all the costs associated with the designing, fitting out and servicing of the space as well as utilities, beverages and an ultra-fast internet connection. The property is perfect for larger businesses, with 2391sqft of space available. Your package can be upgraded to include custom IT infrastructure, furniture, artwork and much more.

transport links

Underground	Goodge Street
Train Station	Euston Station
Road Link	N/A
Airport	London City Airport

Serviced Offices

- **Price** : Â£1094 pcm
- **Min Price** : Â£1094 pcm
- **Min Size** : 1 wkstns
- **Max Size** : 20 wkstns
- **Min Term** : 6 mnths
- **Max Term** : 60 mnths