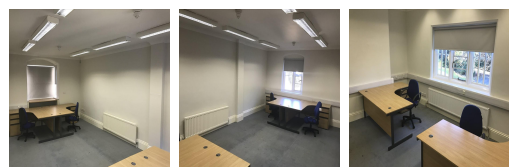
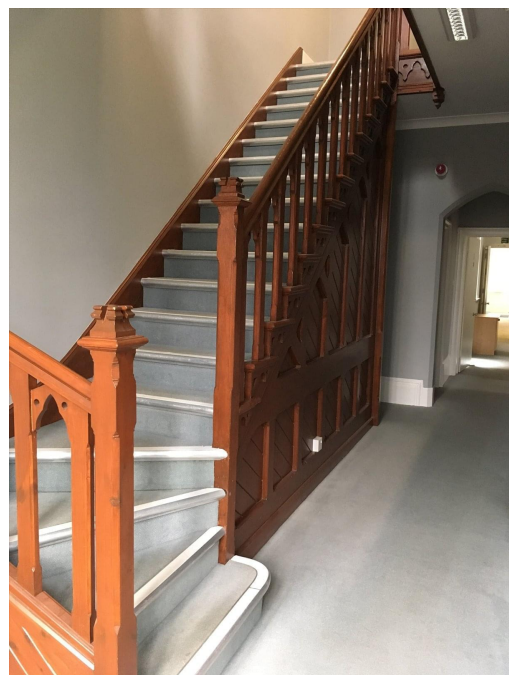


Oakridge Business Centre

Stafford ST16 3RS



The centre is situated on the outskirts of Stafford, just off the north side of the A518 Weston Road. The centre boasts good road links, with Junction 14 of the M6 Motorway around two miles away which provides access to Stoke-on-Trent, Liverpool and Manchester. London and general South-East destinations are also accessible via the M1 link, and the M5 connection gives access to Bristol. Stafford railway station is around a mile from the centre (five-minute drive / 20-minute walk) and offers a wealth of links to major cities, with direct access to London, Manchester, Birmingham, Bristol and Liverpool.

Based just outside of Stafford, this centre is based within a historic, imposing two storey building that boasts a distinctive architectural style. The centre provides office space on both the ground and first floors, with additional cellar space and tenants will benefit from a large car parking area. The spaces are centrally heated, carpeted, have Category II lighting and is secured by electronically operated gates. Offering flexible terms, the centre also has kitchen facilities, professional meeting rooms to host team meetings or clients, high speed internet and a great onsite management team.

transport links

Underground	N/A
Train Station	Stafford
Road Link	N/A
Airport	Hixon Airfield

Serviced Offices

- **Price** : Â£150 pcm
- **Min Price** : Â£150 pcm