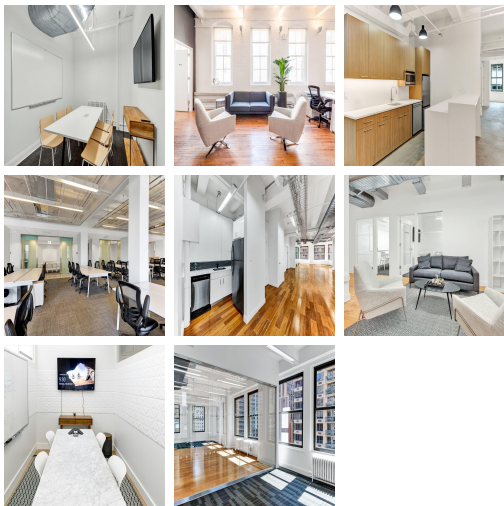
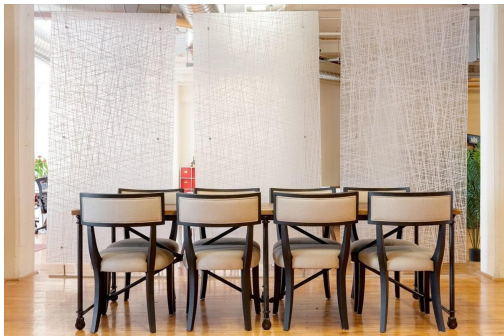


Serviced Office Space UK

London WC2B 6HP



Located on Kean Street, this building is in the centre of the action in London's West End. The property is just moments away from the iconic Covent Garden, with its shops and theatres; the historic Somerset House and the River Thames. Surrounded by bars, restaurants, museums, theatres, galleries and shops, you will have plenty to explore outside of work hours. The nearest Underground stations are Holborn and Covent Garden, offering access to the Piccadilly and Central lines within a five-minute walk. Temple station is an eight-minute walk, providing access to the Circle and District lines.

An exciting opportunity for your business awaits, with bespoke offices that will be tailored to your exact needs. The customisable space allows you to work in an environment that truly reflects your brand. With three floors of space available on flexible terms, from 2,713 sqft up to 5,400 sqft, this centre is perfect for businesses of all types and tenure. The rent is inclusive of all of the costs associated with designing, building out and servicing your office space. This includes cleaning, utilities, high-speed WiFi, furniture and branding. The offices can be upgraded to include custom IT infrastructure and much more.

transport links

Underground	Covent Garden
Train Station	Euston Station
Road Link	N/A
Airport	London City Airport

Serviced Offices

- **Min Term** : 6 mnths