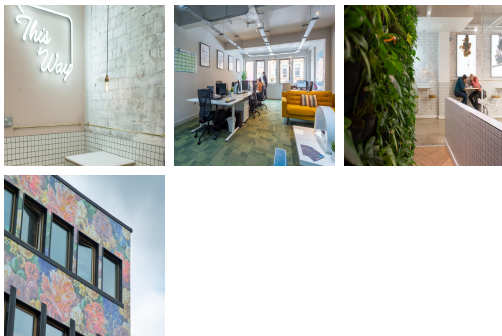


# Serviced Office Space UK

---

## Manchester M3 3BW



This business centre is in a fantastic central Manchester location, close to great transport links and surrounded by amenities. Salford Central railway station is just a five-minute walk. Manchester Victoria Station is a 12-minute walk, offering access to rail and tram services. The property is surrounded by trendy bars and restaurants waiting to be explored on lunch breaks or after hours. Manchester's Arndale Shopping Centre is just a short walk from the centre. This centre is the ideal setting for those professionals commuting from even the furthest reaches of the wider region.

This building is a wonderland for all things digital – providing an ever-expanding hub of creatives with never-ending networking opportunities. This business centre provides newly refurbished high-quality workspace on flexible terms. The centre is accessible 24 hours a day so the clients can work flexibly. This business centre provides fully furnished offices with high-speed internet, parking space, meeting space, professional-grade daily cleaning, IT support and telecom services, and much more. This business centre in Manchester is the leading flexible workspace provider with multiple office solutions for every business.

## transport links

<b>Underground</b>	St Peter's Square
<b>Train Station</b>	Manchester Oxford Road
<b>Road Link</b>	N/A
<b>Airport</b>	Manchester Airport

## Serviced Offices

---

- **Price** : £160 pcm
- **Min Price** : £160 pcm
- **Min Size** : 6 wkstns
- **Max Size** : 10 wkstns
- **Total Size** : 10 wkstns
- **Min Term** : 1 mnths
- **Max Term** : 12 mnths