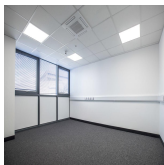
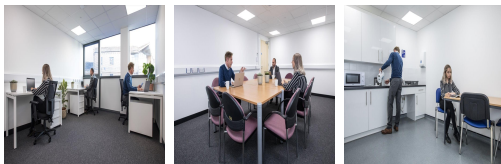
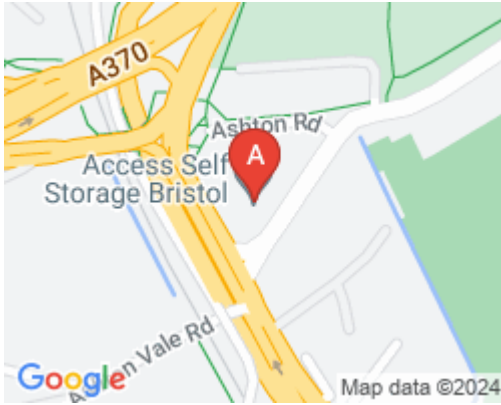


Serviced Office Space UK

Bristol BS3 2LG



Situated adjacent to the Bristol City Football Club and Bristol Bears stadium, the offices are only a few minutes' drive from Bristol City centre. On the A370 and A3029 junction, close to the A38, A369 and the A4, linking up to the M5, M49 and M4 motorways, providing perfect access to the main arterial routes around Bristol. Parking is available on-site, and many restaurants, cafes, shopping centres, and other local amenities are close to this centre. Fantastic transport links are available due to the central location of this space.

This centre is a great space designed to meet the demands of any modern business. The beautifully designed office spaces empower teams and companies for growth with high ceilings and large windows that provide natural lighting. The centre offers several facilities, such as high-speed internet, professional meeting rooms, concierge services, mail handling, business-class printers, a beautiful kitchen, and professional-grade daily cleaning. There are lounges and breakout areas where tenants can take a break during a hectic workday. This building is a wonderland for all things digital - providing an ever-expanding hub of creatives with never-ending networking opportunities.

transport links

Underground	N/A
Train Station	Parson Street
Road Link	A370/A3029
Airport	Bristol Airport

Leased Spaces

- **Price** : Â£3 pcm
- **Min Price** : Â£3 pcm
- **Min Size** : 1 sq ft
- **Max Size** : 20 sq ft
- **Total Size** : 2000 sq ft
- **Min Term** : 3 mnths
- **Max Term** : 12 mnths