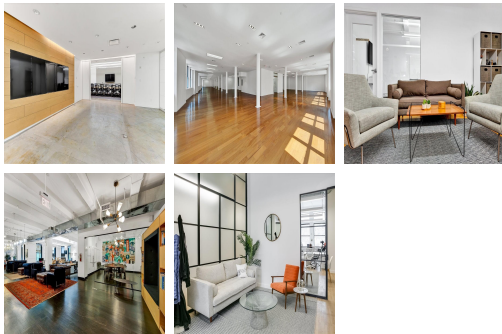
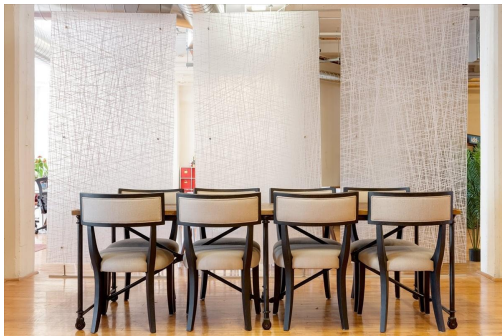


Serviced Office Space UK

London W1W 6XH



The centre is nestled in the heart of Fitzrovia, one of the capital's most interesting and eclectic locations. Fitzrovia's historic spirit of creativity lives on today, making it a first class setting for modern businesses and brands. Tenants will also benefit from close proximity to some of the Capital's best eateries, bars, cafés and stores, as well as fantastic transport links. The centre is within a stone's throw of seven different underground stations, offering access to seven different lines. The closest is Goodge Street, around a seven minute walk away and offering Northern line access. Great Portland Street, around an eight minute walk, offers Circle, Hammersmith and City and Metropolitan line access.

This stunning office space, located in the heart of Fitzrovia, is composed of over 23,000sqft of space. The space is an exciting proposition for a large business who are looking for a bespoke design service and have a strong idea of the space they want to work in. In-house designers and architects will work alongside you to create a working environment that matches up with your brand. As well as the space itself, the price is also inclusive of furniture, design Wi-Fi, utilities, cleaning services and coffee. Premium services – such as custom IT infrastructure or specific artwork – are also available.

transport links

Underground	Great Portland Street
Train Station	Euston Station
Road Link	N/A
Airport	London City Airport

Serviced Offices
