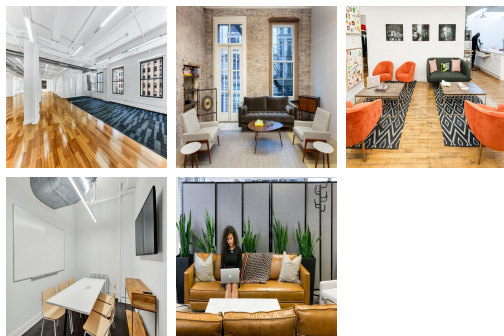
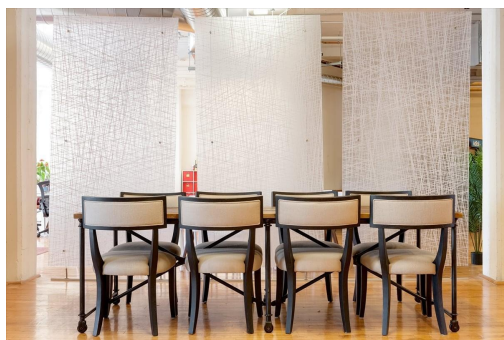


Serviced Office Space UK

247 Tottenham Court Road

London W1T 7QZ



Situated at the southern end of the famous Tottenham Court Road, the centre boasts a prime central London location with excellent transport links and close proximity to a number of the City's biggest attractions and a wealth of eateries and drinking holes. The centre is close to several underground stations, with Tottenham Court Road tube station just a two-minute walk and being served by the Central and Northern lines. Holborn station is around an 11-minute walk and offers Central and Piccadilly line access, with Oxford Circus a similar distance and offering Bakerloo, Central and Victoria line services. The area is also very well served by bus routes. The British Museum is just moments away from the centre, and both Covent Garden and Soho are close by.

Based in the heart of vibrant Fitzrovia, this centre is comprised of over 8,300sqft of prime space. With full customisation options available, tenants can design the space to align with their brand. In-house architects and design teams will work to your blueprint, in addition to the price including the space itself, furniture, design, Wi-Fi, utilities, cleaning services and beverages. The centre is available with flexible terms and offer upgrade packages that include premium services such as custom IT infrastructure and one-of-a-kind artwork. Such a bespoke service will ensure that you walk into your dream space come moving-day.

transport links

Underground	Oxford Circus Underground Station
Train Station	Euston Station
Road Link	N/A
Airport	London City Airport

Serviced Offices
