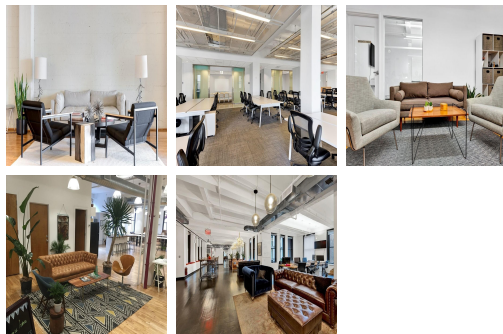


Serviced Office Space UK

23 Great Titchfield Street

London W1W 8AZ



Based in the thriving Fitzrovia area, this centre is close to London's West End, Oxford Street, Bloomsbury, Marylebone and Soho. The offices are well-connected and easily accessible, less than a five-minute walk to Oxford Circus Underground Station (Bakerloo, Central and Victoria lines) and an eight-minute walk to Goodge Street Station (Northern line). The area is well-served by local buses. The centre is surrounded by a plethora of restaurants, hotels, cafes, bars and shops to explore on lunch breaks or after hours.

An incredible space in the heart of buzzing Fitzrovia offers an exciting new opportunity for your business. The recently refurbished space is available on flexible terms and is finished to the highest standard. 3100 square feet of workspace can be customised to meet your business' needs and exact requirements, allowing you to design the work environment you really want. The rent is fully inclusive of the designing, fitting out and servicing of your office space. This includes high-speed WiFi, cleaning services, utility bills and good quality coffee. The opportunity to have a unique space, designed with your influence is one that shouldn't be missed.

transport links

Underground	Oxford Circus Underground Station
Train Station	Euston Station
Road Link	N/A
Airport	London City Airport

Serviced Offices
