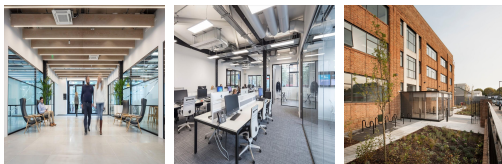
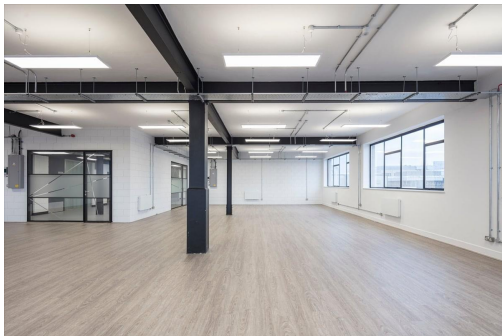


Serviced Office Space UK

London W4 5PY



Power Road is perfectly placed in the heart of Chiswick, just off the M4 and a few minutes' walk from the tube, train and Chiswick Park. The campus is a short walk from Chiswick High Road, voted one of Britain's best high streets, with award winning restaurants and bars, along with the convenience a high street has to offer.

This 1930's Sewing Machine factory has been transformed into a magnificent workspace totalling 11,537 sq ft and is the perfect property from which to base your business. Set across four buildings, there are workspaces available in a variety of sizes, ready to take on a business' personal touch. The courtyard space, filled with light, could be the perfect break-out space for a summer's day, or to host an impressive event. Parking spaces are available, which is always a bonus, both for tenants and visitors.

transport links

Underground	Gunnersbury
Train Station	Victoria Station
Road Link	N/A
Airport	Heathrow Airport

Leased Spaces

- **Price** : Â£30 pcm
- **Min Price** : Â£30 pcm
- **Min Size** : 3 sq ft
- **Max Size** : 92 sq ft
- **Total Size** : 9067 sq ft
- **Min Term** : 3 mnths
- **Max Term** : 92 mnths