

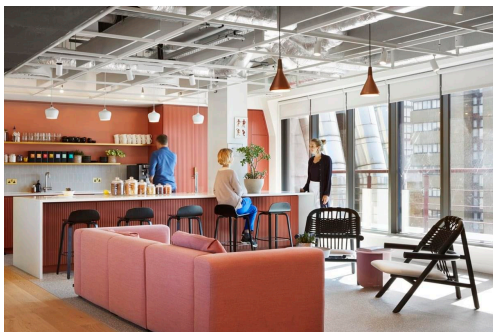
# Serviced Office Space UK

## 33 Broadwick Street

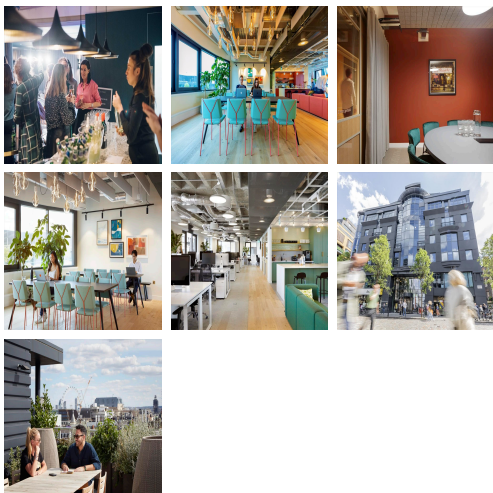
London W1F 0DQ



The centre is on Broadwick Street, in the heart of Soho. This space is just moments away from Carnaby Street and the West End. Such a prime location inevitably means that tenants have options for lunchtimes, with lots of eateries and drinking holes close by. In terms of transport, the centre has Oxford Circus Station (Bakerloo, Central, Victoria lines) a six-minute walk away, Tottenham Court Road (Central, Northern lines) a seven-minute walk away, and Piccadilly Circus (Bakerloo, Piccadilly lines) a six-minute walk away.



This exciting new centre offers six floors of space, beautiful interior design and first-class amenities. The centre has a flexible hot-desking option, a more permanent coworking option or a more traditional, private office. On top of this, tenants can take advantage of fully stocked kitchens, bathrooms and showers, the start of art technology throughout the building and 24hr access to allow them to work into the night if needed. This location is an exceptionally stylish and highly modern business centre installation providing a host of premium and innovative corporate facilities and professional services such as impressive reception services and lobby areas, modern fully furnished private office suites, state-of-the-art professional office equipment, a fast online network, and high-speed internet access.



### transport links

<b>Underground</b>	Piccadilly Circus
<b>Train Station</b>	Piccadilly Circus Station
<b>Road Link</b>	N/A
<b>Airport</b>	London City Airport

### Coworking Spaces

- **Price** : Â£425 pcm
- **Min Price** : Â£425 pcm
- **Total Size** : 80 wkstns
- **Min Term** : 1 mnths
- **Max Term** : 12 mnths