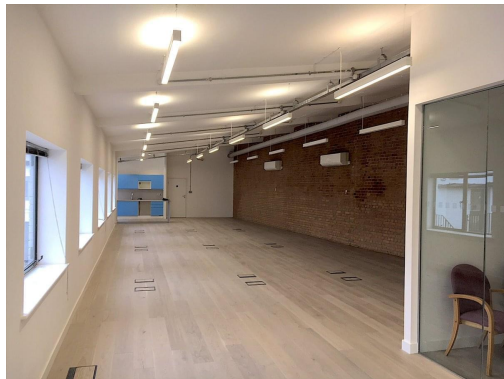


# Serviced Office Space UK

---

## London EC2A 3LT



This Shoreditch-based space boasts an enviable location in one of the capital's most trendy areas and one which is experiencing fast business growth. The centre is also in close proximity to several cultural attractions, with Brick Lane a ten minute walk away and both the Barbican Centre and the Museum of London being within a 20-minute walk. Tenants also have all that Shoreditch has to offer – including its wealth of eateries, drinking holes and shops – on their doorstep. In terms of transport, the centre is seven minutes walk to both Liverpool Street (rail services, Overground, Central, Circle, Hammersmith & City and Metropolitan lines) and Shoreditch High Street Overground station.

Based in the heart of Shoreditch and opening in November, this new centre is composed of over 1,800sqft. The centre is a beautiful first floor office that is part of a former industrial building. Many of the original features have been retained - including stunning exposed brickwork throughout - which contrasts nicely with the modern refurbishments and amenities. The office has a shared private courtyard – a lovely setting for taking a break – and benefits from lots of natural light to produce a productive and light atmosphere. The centre also has two meeting rooms for hosting clients and kitchen facilities.

### transport links

<b>Underground</b>	Old Street
<b>Train Station</b>	Liverpool Street Station
<b>Road Link</b>	N/A
<b>Airport</b>	London City Airport

### Serviced Offices

---

- **Price** : Â£325 pcm
- **Min Price** : Â£325 pcm