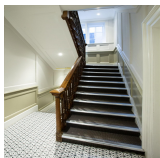
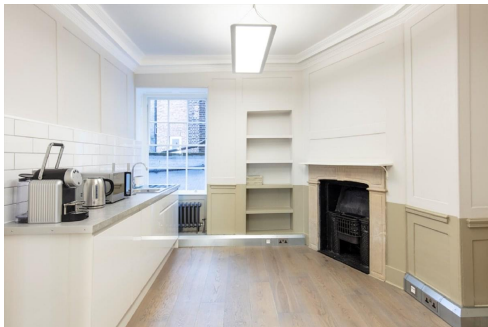


Serviced Office Space UK

London WC2E 7PB



This centre is located in the heart of London, placing tenants and their teams in a well-connected and easily accessible location. This centre is easily accessible from several public transport services, enabling an easy commute. Covent Garden underground station is less than a five-minute walk away, and Holborn and Temple underground stations are less than ten minutes away. Charing Cross railway station is under ten minutes away on foot, offering services within London and beyond. This centre is moments away from all of the popular eateries, shops and entertainment that Covent Garden has to offer. The area has theatres, galleries and museums to explore after hours.

This centre is a great space designed to meet the demands of any modern business. The beautifully designed office spaces empower teams and companies for growth with high ceilings and large windows that provide natural lighting. The centre offers several facilities, such as high-speed internet, professional meeting rooms, concierge services, mail handling, business-class printers, a beautiful kitchen, and professional-grade daily cleaning. There are lounges and breakout areas where tenants can take a break during a hectic workday. This building is a wonderland for all things digital – providing an ever-expanding hub of creatives with never-ending networking opportunities.

transport links

Underground	Covent Garden
Train Station	Charing Cross Station
Road Link	N/A
Airport	London City Airport

Serviced Offices

- **Price** : £515 pcm
- **Min Price** : £515 pcm
- **Min Size** : 5 wkstns
- **Max Size** : 15 wkstns
- **Total Size** : 39 wkstns
- **Min Term** : 3 mnths
- **Max Term** : 24 mnths