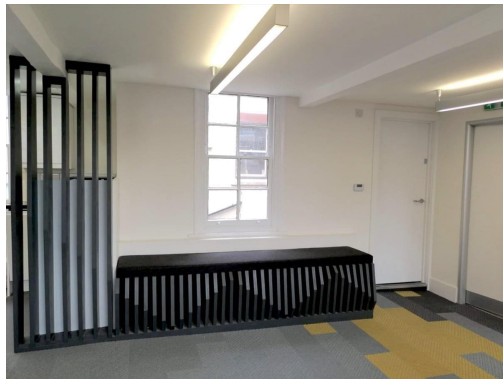


# Serviced Office Space UK

---

## London EC1A 9EJ



The centre is located on Long Lane, just two minutes from the Barbican Centre. Such a prime location means the centre is close to a wide range of cultural attractions, a wealth of eateries, drinking holes and hotels, and also benefits from fantastic transport links. As said, some of the city's most famous attractions are close by, with both the Museum of London and St Paul's Cathedral within a ten-minute walk. In terms of transport links, the centre is stone's throw from Barbican underground station (served by the Circle, Hammersmith and City, and Metropolitan lines).

Based in the Barbican area, this prime central London space is situated in an attractive period building and benefits from an abundance of natural light, manifesting a productive, efficient atmosphere for tenants. The centre also has kitchenette facilities, toilet facilities and perimeter trunking. The office comes furnished with a modern design, which contracts nicely with its traditional exterior and location. The office is composed of 800sqft, with 15 workstations, making it an exciting proposition for a range of business types and sizes. With 24 hour access, tenants can also ditch the traditional 9 till 5 and set their own schedule.

## transport links

<b>Underground</b>	Barbican
<b>Train Station</b>	Liverpool Street Station
<b>Road Link</b>	N/A
<b>Airport</b>	London City Airport

## Serviced Offices

---

- **Price** : Â£383 pcm
- **Min Price** : Â£383 pcm