

# Serviced Office Space UK

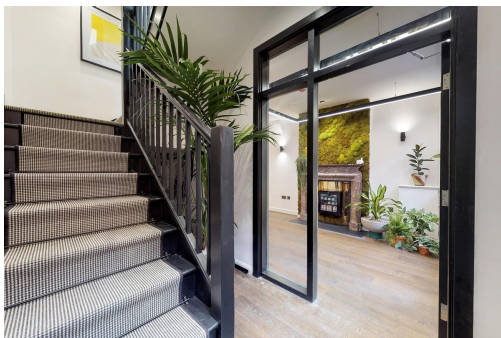
---

## 1 Motley Avenue

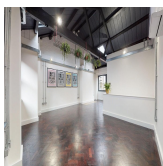
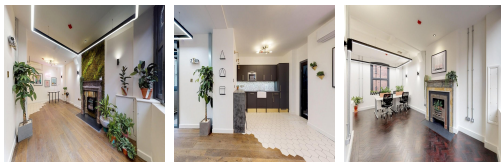
London EC2A 4SU



The centre is on Motley Avenue, in the heart of the trendy Shoreditch. The area has experienced significant growth in recent years. The centre also benefits from splendid transport links, within a 10-minute walk of Old Street, Shoreditch High Street, Liverpool Street and Moorgate stations. Thus, tenants have national rail, overground and underground services (Northern, Central, Circle, Hammersmith and City, and Metropolitan lines). With everything on the doorstep of this business centre, there are also many recreational activities around the corner.



Set in an early 1900s warehouse, this centre is split over two floors and has 1,000 square feet. The centre retains its traditional features, including exposed brick, wooden beams and traditional fireplaces. The centre has a high-speed fibre internet line. Tenants can also take advantage of the centre's inclusive rate, which means no hidden costs. Spacious, fully-furnished offices offer a team somewhere to work comfortably, where members can move in and get started - no need for time wasted setting up various desks. This ultra-modern business centre has amenities that are affordable and meaningful.



### transport links

<b>Underground</b>	Old Street
<b>Train Station</b>	Old Street
<b>Road Link</b>	N/A
<b>Airport</b>	London City Airport

### Serviced Offices

---

- **Price** : Â£340 pcm
- **Min Price** : Â£340 pcm
- **Min Term** : 1 mnths
- **Max Term** : 12 mnths