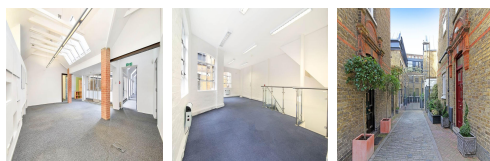
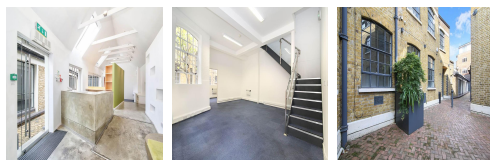


Serviced Office Space UK

Crosby Row

London SE1 1YN



This property is based in the up and coming area of Southwark, just off Crosby Road. The offices have fantastic transport links, only a few minutes from Borough station and just over a five-minute walk from London Bridge station. The London Bridge station redevelopment is almost complete, offering increased rail services and retail facilities. The area is also well-served by local buses. With many restaurants, shops and cafes just a stone's throw away, tenants will be spoilt for choice on their lunch breaks. There are also a multitude of hotels and stylish bars in the immediate area along with attractions such as museums and theatres.

Converted Victorian stable mews in the heart of Southwark offer an exciting new destination for your business. There are four adjoining office buildings set within a private gated courtyard, varying from 323 square feet up to 5,242 square feet. The space is available to rent immediately and is accessible 24-hours a day. The offices have been finished to a high standard and benefit from fantastic natural light, providing a bright, airy and productive work environment. There are excellent on-site facilities such as secure bike storage, showers, kitchen facilities and professional meeting rooms.

transport links

Underground	Borough Station
Train Station	London Bridge Underground Station
Road Link	N/A
Airport	London City Airport

Leased Spaces

- **Price** : Â£5 pcm
- **Min Price** : Â£5 pcm
- **Min Size** : 2 sq ft
- **Max Size** : 35 sq ft
- **Total Size** : 5242 sq ft
- **Min Term** : 36 mnths
- **Max Term** : 120 mnths