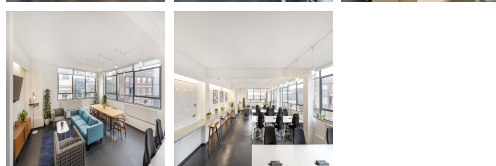
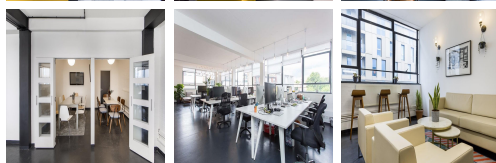
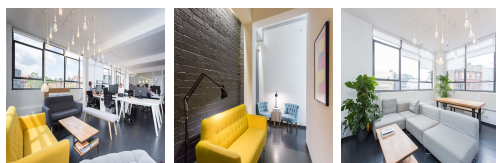
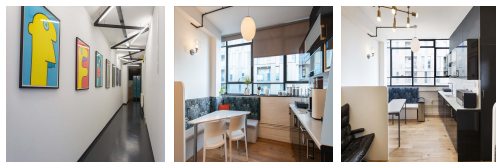


Serviced Office Space UK

2 Club Row

London E1 6LA



This property could not be in a better location. Shoreditch High Street Station is just moments away from the centre. Old Street and Liverpool Street stations are just a short distance away, giving access to overground services, Central, Northern, Circle, Metropolitan and Hammersmith and City lines. The surrounding area offers a wide range of eateries and amenities like banks and retail shops, providing tenants with everything at their doorstep. The centre is accessible from almost every transport link, placing tenants and their teams in a well-connected and easily accessible location.

This building is a wonderland for all things digital – providing an ever-expanding hub of creatives with never-ending networking opportunities. The building has many beautiful period features, such as exposed brick walls, timber-beamed ceilings, and stunning floor-to-ceiling windows. The workspace has recently been fully renovated and focuses on creativity, concentration and comfort. The building has access to a private balcony, a communal functioning kitchen and shower facilities. This business centre is the leading workspace provider with multiple office solutions for every business. Spacious, fully-furnished offices offer a team somewhere to work comfortably, where members can move in and get started - no need for time wasted setting up various desks.

transport links

Underground	Old Street
Train Station	Liverpool Street Station
Road Link	N/A
Airport	London City Airport

Serviced Offices

- **Price** : £300 pcm
- **Min Price** : £300 pcm
- **Min Term** : 1 mnths
- **Max Term** : 12 mnths