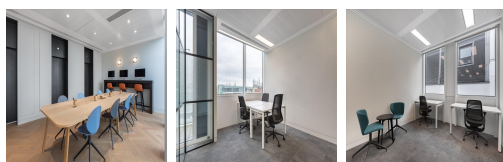
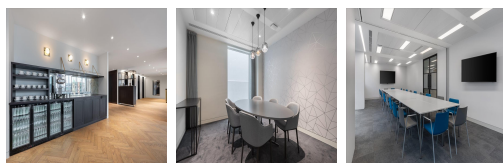
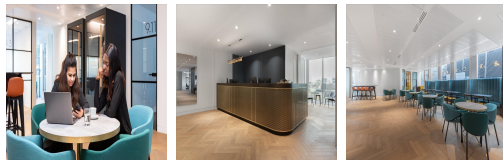
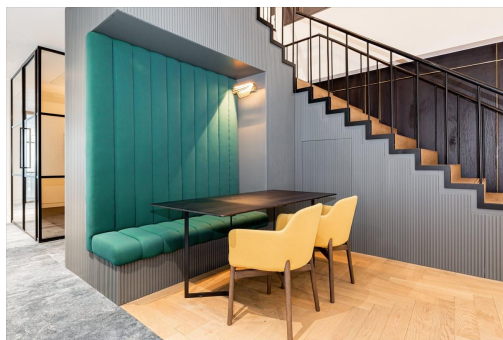


Serviced Office Space UK

20 Andrew Street

London EC4A 3AG



The centre is blessed with a prime central London location, boasting fantastic transport links and close proximity to a multitude of cultural attractions. It is just a three-minute walk to City Thameslink station, providing access to destinations throughout the capital and further afield. The centre is also just a five-minute walk from Farringdon station, providing both National Rail and underground access – the station is served by the Circle, Hammersmith and City and Metropolitan lines. Attractions such as St Paul's Cathedral and the South Bank are within a ten minute walk – ideal for lunch time relaxation.

Situated on the 8th and 9th floors of a prominent Holborn office building, this centre offers a luxury working environment that is complimented by stunning views over Holborn Circus, the City and St Paul's. The centre aims to provide a first class environment for its members and offers a vast array of amenities for you to take advantage of, including complimentary WiFi, refreshments, and a dedicated onsite management team to ease your transition into your new workspace and answer any questions. Other impressive amenities include a lovely onsite deli, monthly breakfast and evening events, private phone booths and the fantastic Club Lounge – an ideal place to unwind with clients or colleagues post-work.

transport links

Underground	Chancery Lane
Train Station	Liverpool Street Station
Road Link	N/A
Airport	London City Airport

Virtual Office

- **Price** : Â£109 pcm
- **Min Price** : Â£109 pcm
- **Min Term** : 24 mnths
- **Max Term** : 999 mnths