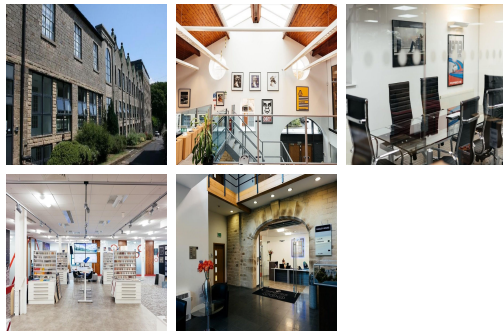
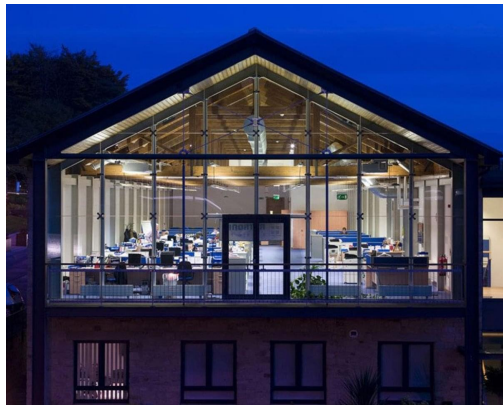


Serviced Office Space UK

Bolton BL7 9RP



The centre is located on the outskirts of Bolton, based in 32 acres of beautiful parkland. The centre is situated just off the A666 – a key arterial road linking Bolton to Blackburn and Manchester. For those that drive, the centre is just a 15-minute drive to Bolton town centre, and tenants can be in central Manchester within 35-minutes. Blackburn is also a 25-minute drive north. It is also just seven-minutes to Bromley Cross train station, which offers direct access to Manchester Victoria via the Ribble Valley line.

Based in Bolton, this centre offers self contained offices with a number of suites in varying sizes available – all fitted to a high specification. Situated in a historic building and benefiting from lovely stylish interior design, the centre also boasts full air conditioning, raised floors and kitchen facilities. Alternatively, the centre also has a lovely onsite café, which offers both internal and external seating – great if you wish to spend lunch looking at the stunning surrounding parkland. Other amenities include lightning quick broadband, flexible terms and an abundance of onsite parking.

transport links

Underground	N/A
Train Station	Bromley Cross
Road Link	N/A
Airport	City Airport Ltd

Serviced Offices

- **Price** : £52 pcm
- **Min Price** : £52 pcm
- **Min Size** : 4 wkstns
- **Max Size** : 222 wkstns
- **Total Size** : 1146 wkstns
- **Min Term** : 12 mnths
- **Max Term** : 120 mnths