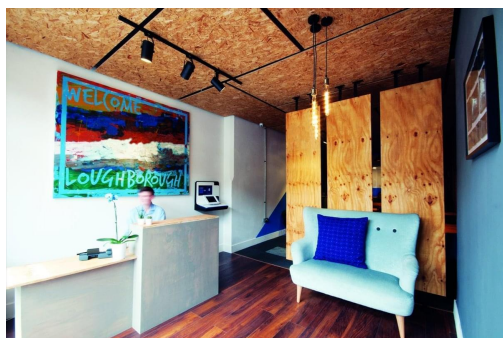


Serviced Office Space UK

Loughborough LE11 1EU



Loughborough train station is eight-minutes away on foot which has excellent links to Nottingham, Leicester and a direct link into London. There are bus stops almost on the door step of this building, connecting this office to areas further afield. For those who wish to drive to work, there is free on-street parking available. Ideally located just a four-minute walk to Loughborough's busy town centre, this work space is near a multitude of restaurants, bars, cafes, shops and entertainment, perfect to enjoy after hours. Queen's Park is nearby, offering a pleasant place for a lunch time stroll.

This centre offers quirky and vibrant co-working space which is conveniently close to Loughborough's town centre. The office is perfect for those who want to work along-side others in an inspiring environment with a sense of community. The workspace is bright, modern and open plan and offers users access to a meeting room. There are free car parking spaces on the street and the site is CCTV monitored. The centre boasts a fresh bean to cup coffee machine, snacks and a kitchen for tenants use. A dedicated on-site manager is there for assistance and advice when needed. Tenants have access to high-speed WiFi, printing facilities and private lockers.

transport links

Underground	N/A
Train Station	Loughborough
Road Link	N/A
Airport	East Midlands Airport

Coworking Spaces

- **Price** : Â£150 pcm
- **Min Price** : Â£150 pcm
- **Total Size** : 14 wkstns
- **Min Term** : 1 mnths