

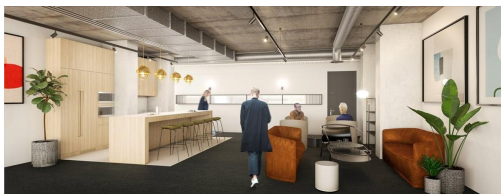
Serviced Office Space UK

5 Upper St Martins Lane

London WC2H 9EA



This brilliant office building is located just moments away from both Covent Garden and Leicester Square Underground Stations, providing direct access to the Northern and Piccadilly lines. Soho and Covent Garden are amazing and vibrant areas of Central London, with a huge variety of restaurants, bars, shops and theatres. There are many places surrounding the work centre that you will be able to grab a quick lunch, for example Starbucks, The Ivy, Dishoom and Five Guys are all located a stone's throw away.



This listing offers outstanding office space in the heart of Central London. The spacious and open plan office floors have room for up to 120 people on each floor. There is an impressive ground floor lounge and reception area, whilst the offices, meeting rooms and breakout areas are on the upper floors. Tenants can benefit from a wealth of amenities such as phone booths, shower facilities, bike storage and a fantastic roof terrace area with amazing views across London. Tenants will also have access to kitchen facilities and dining areas on each floor. Situated in such a vibrant area, there are plenty of great local amenities and excellent transport links.

transport links

Underground	Leicester Square
Train Station	Charing Cross Station
Road Link	N/A
Airport	London City Airport

Virtual Office

- **Price** : Â£75 pcm
- **Min Price** : Â£75 pcm
- **Min Term** : 3 mnths
- **Max Term** : 36 mnths