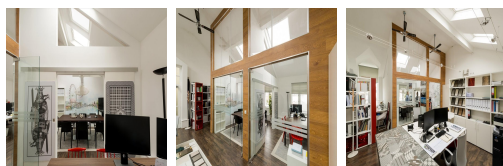


Serviced Office Space UK

London W11 3EP



This centre is located in the heart of London, placing tenants and their teams in a well-connected and easily accessible location. This workspace has excellent transport links, being well connected to the circle, district and central lines on the underground. The office is only a five-minute walk to Notting Hill Gate tube station and 12 minutes to Bayswater tube station. The overground station at Shepherds Bush is a 25-minute walk away. The lively Portobello Road is a two-minute walk away, offering an abundance of shops, cafes and restaurants to explore with colleagues or clients.

This impressive business centre in Notting Hill offers coworking spaces within a modern and stylish top-floor office. There are meeting rooms available for use as well as high-speed wifi. The office is beautifully designed with lots of space, ensuring a relaxing work environment. The gated building is accessible 24 hours a day, allowing maximum flexibility with working hours, and features secure bike racks within the property, perfect for those cycling to work. There is access to a kitchen as well as printing and copying facilities. This building is a wonderland for all things digital – providing an ever-expanding hub of creatives with never-ending networking opportunities.

transport links

Underground	Notting Hill Gate
Train Station	Victoria Station
Road Link	N/A
Airport	London City Airport

Coworking Spaces

- **Price** : £243 pcm
- **Min Price** : £243 pcm
- **Total Size** : 13 wkstns
- **Min Term** : 1 mnths
- **Max Term** : 24 mnths