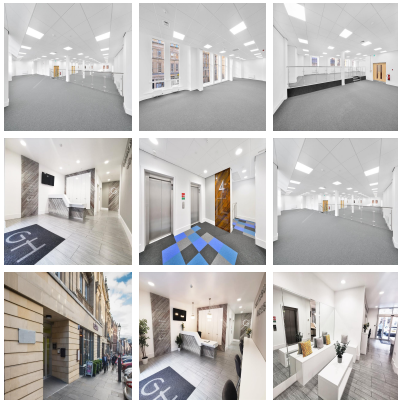
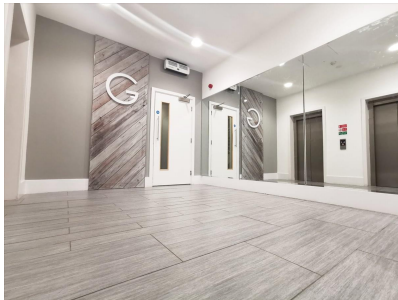


# Serviced Office Space UK

## Grey Street

### Newcastle NE1 6AE



Monument Metro Station, Eldon Square Shopping Centre, Fenwick and Monument Mall are less than a two minute walk away from the building. There are also a number of bus stops located on Pilgrim Street and Blackett Street which provides access across the North East. Central Station is approximately a 10 minute walk from the building, providing access to the region's rail network, with the ability to reach London in less than 3 hours. Within close proximity of the building you'll find plenty of restaurants, bars and individual cafes, with the Quayside just a five minute walk away. From here, enjoy a walk along the Tyne and take in the spectacular views of the City. Head over the bridge to the Baltic Flour Mills, where you'll find contemporary art exhibitions, bursting with the local culture.

Gainsborough House is located on one of England's finest streets, Grey Street, right in the heart of Newcastle's central business district. The Grade II Listed building has recently been refurbished and undergone a number of external repairs and decoration. It comprises of 16,000 sq. ft. modern, contemporary office space. Including LED lighting throughout, shower facilities, new flooring and wall covering. The third-floor space is currently available to rent and offers flexible open-plan spaces. Floors can be split into suites from 1,000 sq. ft. or partitioned to provide meeting rooms/private offices. Each office tenant is offered secure, on-site car parking. There is also, 9,700 sq.ft. of space on the ground floor which is occupied by an artisan, wood-fired pizza restaurant, Pizza Punks. Monument Metro Station, Eldon Square Shopping Centre, Fenwick and Monument Mall are less than a 2-minute walk away. There are a number of bus stops located on Pilgrim Street and Blackett Street which provides access to the North East. Central Station is approximately 10 minute walk and provides access to the region's rail network, with the ability to reach London in less than 3 hours.

### transport links

<b>Underground</b>	Monument Metro Station
<b>Train Station</b>	Manors
<b>Road Link</b>	N/A
<b>Airport</b>	Newcastle Airport

### Leased Spaces

- **Min Size** : 10 sq ft
- **Total Size** : 2978 sq ft
- **Min Term** : 12 mnths