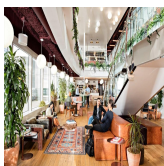
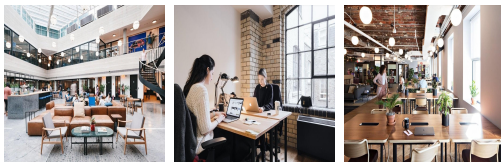
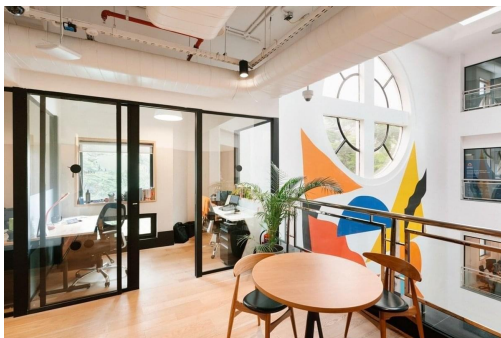


Serviced Office Space UK

125 Kingsway

London WC2B 6NH



The centre is in central London, just moments away from Holborn underground station. Tottenham Court Road station is a nine-minute walk and offers access to the Northern Line and the future Elizabeth Line. Such a central location has transport links but is a stone's throw away from some of London's best cultural attractions, eateries and drinking holes. Covent Garden is around six-minute walk, with lots to offer. The British Museum is also just an 11-minute walk. London's West End is also minutes away with its wealth of theatres and eateries.

This location is an exceptionally stylish and highly modern business centre installation providing a host of premium and innovative corporate facilities and professional services such as impressive reception services and lobby areas, modern fully furnished private office suites, state-of-the-art professional office equipment, a fast online network, and high-speed internet access. The refined design and stunning landmark architecture are locally renowned as a commercially significant business establishment incorporating a neutral palette, international style, and industrial materials to create an elegant and fun workspace.

transport links

Underground	Russell Square Station
Train Station	Euston Station
Road Link	N/A
Airport	London City Airport

Coworking Spaces

- **Price** : £450 pcm
- **Min Price** : £450 pcm
- **Total Size** : 20 wkstns
- **Min Term** : 1 mnths
- **Max Term** : 12 mnths