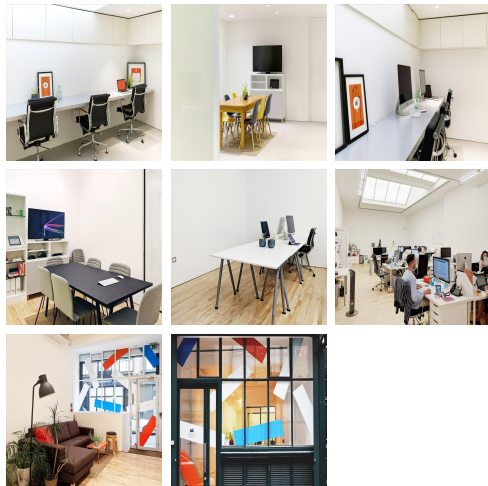


Serviced Office Space UK

London EC2A 3PB



The studio is located ideally close to public transport routes. Within a five-minute walk you'll be able to access Old Street tube and Shoreditch High Street Overground stations and Liverpool Street station is just a 10 minute walk away. There are plenty of bus routes running nearby as well, giving you great access across London and beyond. Just a minute away from the popular Curtain Road and Pitfield Street, you'll find plenty of cool eateries, bars, cafes and shops to enjoy in your out of office hours. Whether you're wanting to entertain clients, take a break from the office or bond as a team, this location is ideal.

This recently refurbished modern studio is located in the heart of Shoreditch, offering a variety spaces which is suitable for all types of businesses, from individual entrepreneurs to SMEs. In the main studio area you will find 5 fixed desks that can be rented individually, in couples or altogether. The space is available on a monthly rolling contract and so is completely flexible dependant on your needs. The building is fit to a high specification with excellent natural light and high ceilings, making you feel instantly at home. The second office is a semi-private space that can fit up to a maximum of 10 people. The lease on this office is flexible, however is available for a minimum of 6 months. There is plenty of ample space, including natural light and is inclusive of all utilities, excluding phones and printing.

transport links

Underground	Old Street
Train Station	Liverpool Street Station
Road Link	N/A
Airport	London City Airport

Sublet Office Spaces

- **Price** : £300 pcm
- **Min Price** : £300 pcm
- **Max Size** : 10 wkstns
- **Total Size** : 10 wkstns
- **Min Term** : 6 mnths
- **Max Term** : 12 mnths