

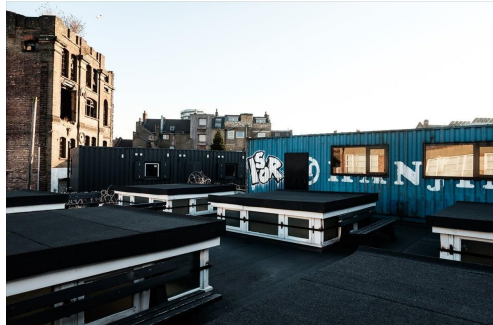
# Serviced Office Space UK

## 11-12 The Oval

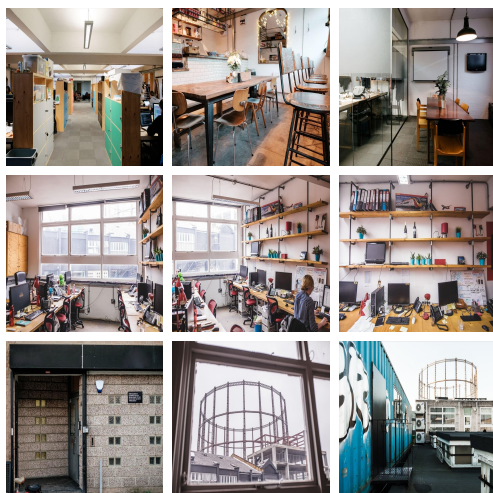
### London E2 9DT



Situated in a prime location in London, surrounding the space are many facilities like eateries, where tenants can enjoy a lunch break or an evening of entertaining clients. Commuting to work is also easy. This centre is conveniently located and boasts excellent transport links as well. The surrounding area offers a wide range of eateries and amenities like banks and retail shops, providing tenants with everything at their doorstep. The centre is accessible from almost every transport link, placing tenants and their teams in a well-connected and easily accessible location.



The refined design and stunning landmark architecture are locally renowned as a commercially significant business establishment incorporating a neutral palette, international style, and industrial materials to create an elegant and fun workspace. Spacious, fully-furnished offices offer a team somewhere to work comfortably, where members can move in and get started - no need for time wasted setting up various desks. This amenity-rich complex is the perfect location for any business seeking a modern workspace to thrive. This ultra-modern business centre has amenities that are affordable and meaningful.



### transport links

<b>Underground</b>	Bethnal Green London Underground Station
<b>Train Station</b>	Liverpool Street Station
<b>Road Link</b>	N/A
<b>Airport</b>	London City Airport

### Serviced Offices

- **Price** : Â£225 pcm
- **Min Price** : Â£225 pcm
- **Min Size** : 18 wkstns
- **Max Size** : 48 wkstns
- **Total Size** : 100 wkstns
- **Min Term** : 12 mnths
- **Max Term** : 12 mnths