

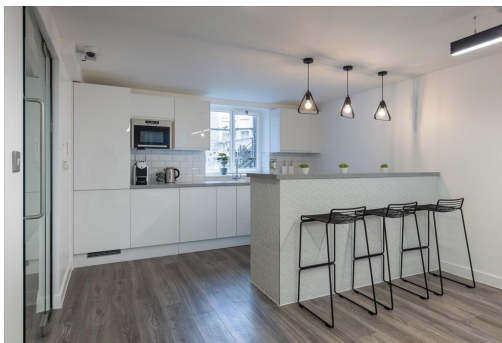
# Serviced Office Space UK

## 116 Baker Street

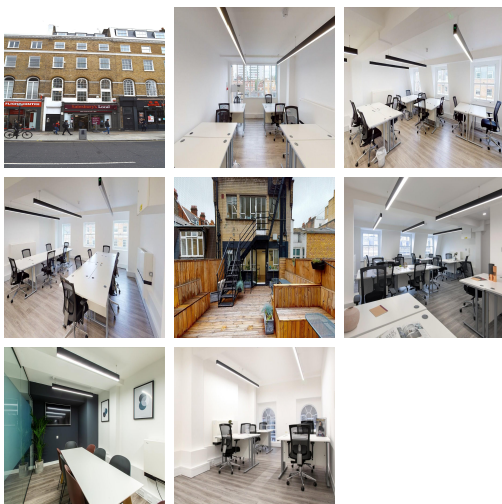
London W1U 6TS



This centre is located in Marylebone, placing tenants and their teams in a well-connected and easily accessible location. Tenants can take advantage of both Baker Street underground station and Marylebone station being within a seven-minute vicinity. Baker Street is a major transport hub of London, so commuting from any corner should not cause any issues. The centre is also just a 5-minute walk from Hyde Park and Regent's Park - effectively nestled between the two - allowing members to take a lunchtime stroll.



The space is situated on one of London's most famous streets, placing clients and their teams in a thriving area buzzing with activity. Boasting an abundance of natural light within the space, the centre offers a variety of options from contemporary private offices to full suites. Tenants can craft and grow their own identity within the confines of a luxury centre. Flexible terms are on offer, and the rates are all-inclusive, with a raft of amenities included. Daily cleaning, in-house maintenance, superfast internet connection, IT support and a shared kitchen facility are just a few of the perks this centre provides to its members.



### transport links

<b>Underground</b>	Baker Street Station
<b>Train Station</b>	Euston Station
<b>Road Link</b>	N/A
<b>Airport</b>	London City Airport

### Serviced Offices

- **Price** : Â£450 pcm
- **Min Price** : Â£450 pcm
- **Min Size** : 4 wkstns
- **Max Size** : 20 wkstns
- **Total Size** : 99 wkstns
- **Min Term** : 3 mnths
- **Max Term** : 12 mnths