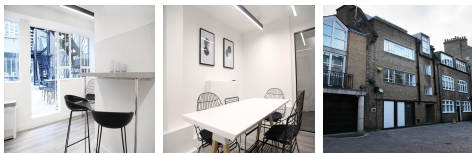


Serviced Office Space UK

12 David Mews

London W1U 6EG



The centre is based in the stylish 'urban village' of Marylebone, distinguished by its period building, this centre is less than 500 feet from Marylebone Road with its raft of independent boutiques, cafes and designer stores. With Regent's Park, just a seven-minute walk from the door and Hyde Park just 16-minutes in the other direction, clients can spend their lunch hour basking in the wonders of London's world-famous parks and experience one of the city's biggest highlights. With such a central location, the centre benefits from an abundance of transport options. The centre is just a four-minute walk from Baker Street underground station, ten minutes from Marylebone Station.

The centre is fully furnished. It offers a modern, designed workspace in a highly sought-after central London location. Spanning three whole floors, the space benefits from an abundance of natural light and a contemporary feel. The building is self-contained, and a variety of private or office suites are on offer. With the flexibility on offer here, it is an ideal place to grow clients' businesses and define their brands. The centre offers all-inclusive flexible terms, benefiting from daily cleaning, IT support, and in-house maintenance allowing for a quick fix for any problems. Tenants can take advantage of super-fast fibre internet with a dedicated private connection, dedicated meeting rooms that are free of charge, a shared kitchenette, 24-hour access and CCTV.

transport links

Underground	Baker Street Station
Train Station	Euston Station
Road Link	N/A
Airport	London City Airport

Serviced Offices

- **Price** : Â£480 pcm
- **Min Price** : Â£480 pcm
- **Min Size** : 4 wkstns
- **Max Size** : 15 wkstns
- **Total Size** : 35 wkstns
- **Min Term** : 3 mnths
- **Max Term** : 12 mnths