

Serviced Office Space UK

Edinburgh New Town

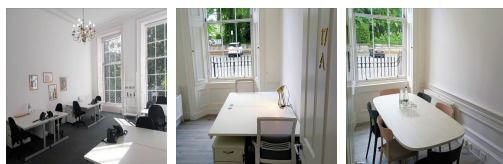
Edinburgh EH3 6AA



The business centre is situated adjacent to Charlotte Square in the centre of the city's commercial district. Edinburgh has some excellent restaurants, including the magnificent Dome located on George Street. Many restaurants, cafes, shopping centres, and other local amenities are close to this centre. This centre boasts excellent transport links. Waverley Station provides rail links from Edinburgh across the country, while Edinburgh Airport is just under 4 miles from the centre.

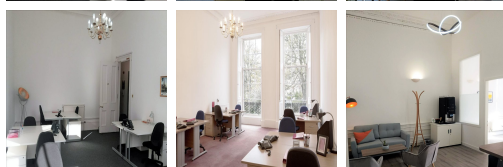


This centre is a great space that has been designed to meet the demands of any modern business. This prominent period building provides stylish offices and retains many original features, such as sash windows making for a fabulous space to spend a working day. This centre provides an excellent platform for any business to flourish with its cost-effective workplace solutions. A bright reception area creates a fantastic first impression, with modern furnishings throughout the workspace. Several professional meeting rooms are available. The monthly fee is inclusive of most of the utilities and business services, and the space can be accessed 24 hours a day by tenants.



transport links

Underground	N/A
Train Station	Edinburgh Waverley Station
Road Link	M8 jct 1
Airport	Edinburgh Airport



Serviced Offices

- **Price** : Â£199 pcm
- **Min Price** : Â£199 pcm
- **Min Size** : 1 wkstns
- **Max Size** : 800 wkstns
- **Total Size** : 2880 wkstns
- **Min Term** : 3 mnths
- **Max Term** : 36 mnths

