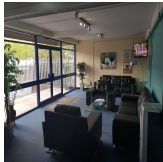
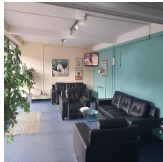


Serviced Office Space UK

Tamworth B77 1AG



Based in Tamworth, this centre is conveniently placed for quick access to transport links and nearby amenities. Just a 4-minute drive to Tamworth train station, any business meetings that require rail travel will not be missed. For more substantial travel needs, Birmingham International Airport is a mere 23-minute car journey. The centre also offers easy access to the A5. The centre also offers easy access to Tamworth's attractions. Both the town centre and the Ankerside shopping centre are less than 20-minutes walk, which both offer many eateries and shopping options.

This centre comprises of a mix of both serviced offices and industrial units. Boasting 10 serviced offices with sizes ranging from 148sq.ft to 526sq.ft, this centre benefits from a range of amenities. Tenants will have access to a number of meeting rooms, a communal kitchen and 24-hour a day security. There are also 6 light industrial units available within this centre, ranging from 100 to 2269sq.ft. All of these units are self-contained and benefit from 3 phase electricity, kitchen facilities and parking available. This secure centre is an ideal place for businesses to set up a regional office, or for start-ups to establish themselves.

transport links

Underground	N/A
Train Station	Tamworth
Road Link	N/A
Airport	Birmingham Airport

Workshop and Industrial Units

- **Price** : Â£1 pcm
- **Min Price** : Â£1 pcm
- **Total Size** : 1437 sq ft
- **Min Term** : 12 mnths
- **Max Term** : 60 mnths