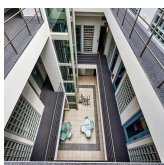


Serviced Office Space UK

20 Mortlake High Street

London SW14 8JN



This office is in the London Borough of Richmond and seven miles south-west of Central London. It is on the banks of the River Thames, in an affluent location benefiting from a village atmosphere with several local shops, cafes and riverside pubs. The area benefits from excellent road links. Several bus routes serve the immediate local area, and there are excellent rail connections with Mortlake train station providing trains in London Waterloo (fastest travel time of 22 minutes) and trains to Richmond (only 4 minutes travel time). The regional transport links are also excellent and provide all prospective tenants with a range of frequent and convenient services throughout the area.

The centre has an on-site café, gym and meeting rooms. It offers an extensive range of spaces, from single hot desks to offices with up to 20 workers, and all suites are ready for immediate occupation on flexible terms to suit the tenant's needs. Spacious, fully-furnished offices offer a team somewhere to work comfortably, where members can move in and get started - no need for time wasted setting up various desks. The centre is ideal for any business - whether a start-up finding its first office or an established business looking to branch out to new surroundings - and boasts a wealth of amenities and facilities.

transport links

Underground	Victoria Station
Train Station	Victoria Station
Road Link	N/A
Airport	Heathrow Airport

Coworking Spaces

- **Price** : Â£150 pcm
- **Min Price** : Â£150 pcm
- **Total Size** : 6 wkstns
- **Min Term** : 3 mnths
- **Max Term** : 12 mnths