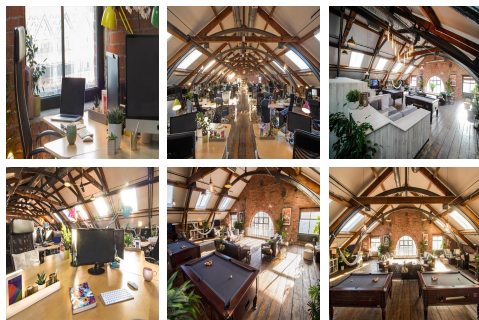
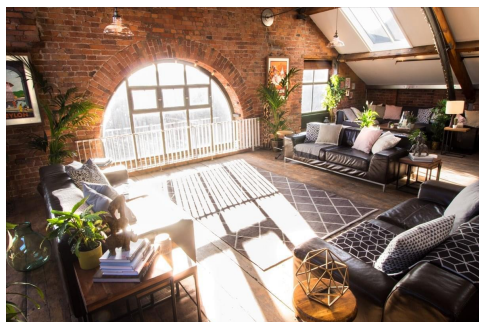


Serviced Office Space UK

Jersey Street

Manchester M4 6JG



This office space is in Ancoats, an inner-city area of Manchester, next to the Northern Quarter and the northern part of Manchester city centre. Neapolitan pizza, artisan coffee and Japanese matcha can all be in the exciting district. Manchester Piccadilly train station is an 11-minute from the centre, and Manchester Victoria train station is just an 18-minute walk away. There is also a bus stop a five-minute walk away from the centre. The Manchester Ring Road is just 0.4 miles away. The centre is accessible from almost every transport link, placing tenants and their teams in a well-connected and easily accessible location.

This space is to be a home-from-home for creatives. There are also comfortable sofas, booths and hammocks to work. This space has a modern open-plan feel to maximise space and light. The business centre places high emphasis on the well-being of members and taking care of tenants' needs so that they can focus on running their businesses. Members enjoy 24/7 access to the centre, ensuring maximum flexibility in working hours. Use of all facilities (meeting rooms, internet, utilities, printing, services) at the flat membership rate. CCTV is in operation with onsite management and mail handling. The centre has a diverse community of creatives from industries including fashion and print design, landscape architecture, interior design, music production, graphic design and web development. There is a wealth of knowledge and experience within the space.

transport links

| | |
|---------------|-----------------------|
| Underground | N/A |
| Train Station | Manchester Piccadilly |
| Road Link | N/A |
| Airport | Manchester Airport |

Coworking Spaces

- **Price** : Â£250 pcm
- **Min Price** : Â£250 pcm
- **Total Size** : 120 wkstns
- **Min Term** : 1 mnths
- **Max Term** : 36 mnths