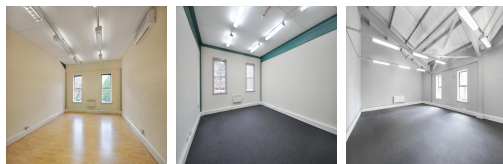
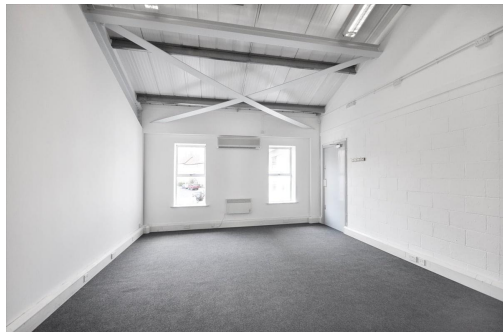


Serviced Office Space UK

London W10 6BN



Located in a great area of West London, this centre has some great local amenities all within walking distance, including the well-known Portobello market where you will find a range of places to grab a bite to eat, drink and browse through one of the largest antique marketplaces. This space also offers easy access to central London from the close underground stations such as Ladbroke Grove station and Kensal green station. Buses also run frequently nearby, making the centre even more accessible.

This business centre in a prime area of London offers bright office and studio space. The large windows and high ceilings make each office feel spacious and offer an abundance of natural light, creating a great work environment. Amenities here include parking spaces, and the availability of shower facilities. Cycling to work is a great option and with the on-site bike racks you will have peace of mind knowing your bike is safe and secure. Offices are available on flexible terms. Require flexible working hours? Here you can make use of the 24-hour access, allowing you to work when suits you best.

transport links

Underground	Kensal Green
Train Station	Euston Station
Road Link	N/A
Airport	Heathrow Airport

Leased Spaces

- **Price** : Â£3 pcm
- **Min Price** : Â£3 pcm
- **Min Size** : 5 sq ft
- **Max Size** : 50 sq ft
- **Total Size** : 1673 sq ft
- **Min Term** : 6 mnths
- **Max Term** : 24 mnths