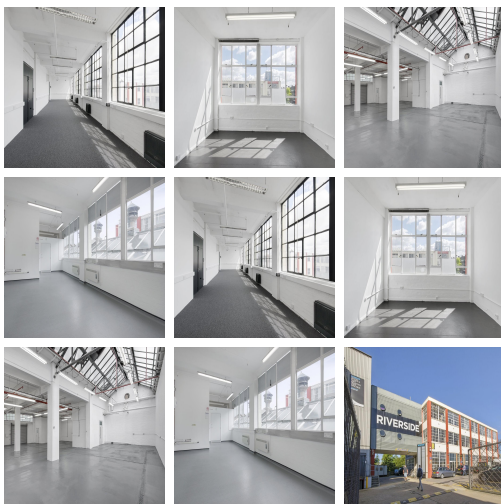
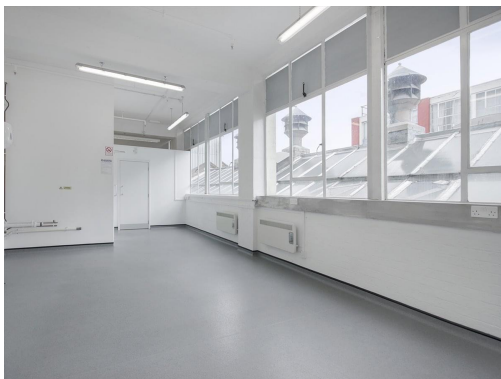


# Serviced Office Space UK

---

## Haldane Place

London SW18 4UQ



This space situated in a prime south London location is surrounded by many local businesses, here you will find something to keep everyone entertained from Flip Out Leisure Centre to the various surrounding bars and restaurants. The closest train station is Earlsfield station just a short 8 minute walk away, here you will find fast access to London Waterloo, Victoria and Southfields tube station. For international travel, Heathrow and London City Airports can be reached easily by public transport.

This vibrant business centre in a prime location of London offers a range of office, studio and light industrial space, attracting a wide range of industries. The friendly on-site management team are on hand to answer any queries and help your business thrive. Other amenities here include 24-hour access, on-site cafe, bike racks and on-site showers, which are perfect for those running or cycling into the office. There are parking spaces available, taking away the worry of finding somewhere to leave your car. The space offers reception services, and has excellent transport links, perfect for commuters.

### transport links

<b>Underground</b>	Southfields Station
<b>Train Station</b>	Victoria Station
<b>Road Link</b>	N/A
<b>Airport</b>	LivingWell Health Club

### Leased Spaces

---

- **Min Size** : 6 sq ft
- **Max Size** : 50 sq ft
- **Total Size** : 81929 sq ft
- **Min Term** : 6 mnths
- **Max Term** : 24 mnths