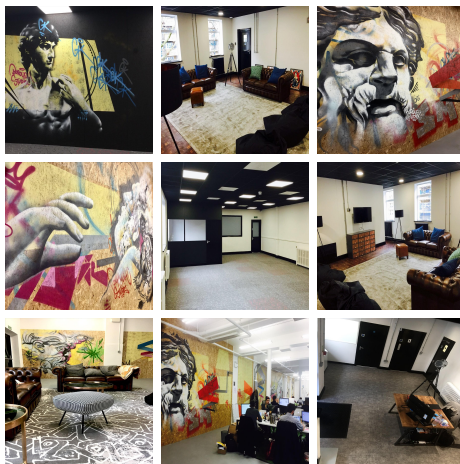


# Serviced Office Space UK

## London SE1 1PP



The site is a short walk from Borough Market, London Bridge, Southbank and Bermondsey. Borough Market- A source of British and International produce and London's most renowned food and drink market. With over 100 stalls selling gourmet meals, fish, meats, vegetables, ciders, breads, coffees and cakes your choices are endless. The Southbank- This tree lined Thames bank is home to a number of London's greatest attractions, including: The London Eye, The Tate Modern, The Globe Theatre and The National Theatre, as well as a variety of world class arts venues. The Southbank is also known for its large variety of restaurants and historic pubs. The Shard - The tallest building in the EU, this 95 storey iconic tower is not only the home of a number of high end bars and restaurants, it is also the driving force behind a surge of new independent bars and restaurants in the local area. Bermondsey Street - Hyper trendy, but still rough around the edges and oozing with history, Bermondsey Street caters to both foodies and those looking for a drink after work. Bermondsey Street is the perfect location for up and coming chefs to set up shop. It is also home to a number of amazing pubs and cocktail bars, including 214 Bermondsey offering over 100 gins!

This professional office space is located near London Bridge, SE1, and offers fully serviced office space and coworking, on flexible terms. Here you will find all-inclusive pricing, so you can move in with peace of mind that there will be no unexpected costs each month, and all offices at this property are fully furnished. Located in a refurbished print works with communal break out areas reminiscent of a New York coffee house, this space is truly unique. The centre has a number of larger spaces that are ideal for companies of 15-30 people who are looking for more room at an affordable price.

### transport links

<b>Underground</b>	Borough Station
<b>Train Station</b>	London Bridge Underground Station
<b>Road Link</b>	N/A
<b>Airport</b>	London City Airport

### Coworking Spaces

- **Price** : £350 pcm
- **Min Price** : £350 pcm
- **Total Size** : 200 sqft
- **Min Term** : 3 mths
- **Max Term** : 12 mths