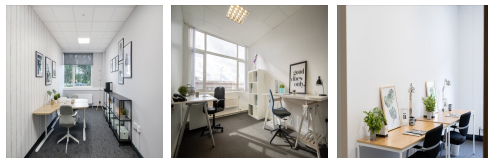


Serviced Office Space UK

Basing View

Basingstoke RG21 4HG



This centre is located in Basingstoke, next to Eastrop Park, perfect for a short walk or a rest during lunch break. The Basingstoke train station is less than a 15-minute walk from the centre, making it accessible, and clients can easily walk to the shopping centre, where there is a shop and places to eat, as well as a cinema and bars. The station offers services to London Waterloo, perfect for meetings in the city, as well as to Birmingham New Street and a host of other destinations. The centre is accessible from almost every transport link, placing tenants and their teams in a well-connected and easily accessible location.

This centre has won awards for its innovative design. It offers a variety of workspaces, including serviced offices for small to medium-sized and several larger self-contained offices with kitchenettes. The centre also boasts an impressive roof garden, a reception and a cafeteria, so clients have everything they need without leaving the building. The centre has meeting rooms with a design which will aid productivity. This centre is perfect for modern businesses and offers opportunities to extend and grow. This building is a wonderland for all things digital – providing an ever-expanding hub of creatives with never-ending networking opportunities.

transport links

| | |
|---------------|--------------------|
| Underground | N/A |
| Train Station | Basingstoke |
| Road Link | N/A |
| Airport | Blackbushe Airport |

Sublet Office Spaces

- **Price** : £450 pcm
- **Min Price** : £450 pcm
- **Min Size** : 1 wkstns
- **Max Size** : 686 wkstns
- **Total Size** : 3032 wkstns
- **Min Term** : 12 mnths
- **Max Term** : 120 mnths