

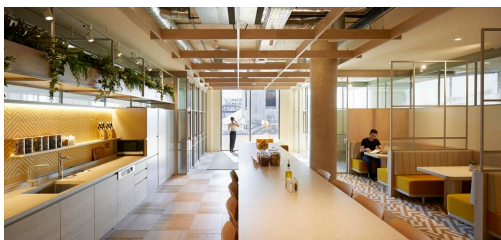
Serviced Office Space UK

180 Borough High Street

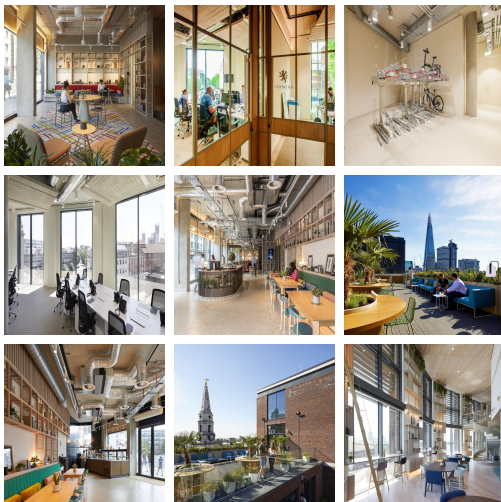
London SE1 1LB



This office benefits from being in Southwark, in a London location, just south of the River Thames. The office is directly opposite Borough Station, which is for commuters travelling by tube and is just a one-minute walk from Borough Station bus stop. The surrounding area has local amenities like Starbucks, Joe's Kitchen, John Harvard Library and various hotels. Borough Market and other tourist attractions like London Bridge and The Shard are all within walking distance. Commuting to work is also easy.



These exceptionally well-equipped and fully functional private offices and collaborative team suites make productive, and the visitors are impressed with the building's vibrant working atmosphere and an impressive degree of corporate prestige. 24-hour access is provided at this location to accommodate business needs in any time zone. This location offers fully-furnished, well-equipped offices for rent that help a company present a polished image while keeping overhead costs low. This building is a wonderland for all things digital - providing an ever-expanding hub of creatives with never-ending networking opportunities.



transport links

Underground	Borough Station
Train Station	London Bridge Underground Station
Road Link	N/A
Airport	London City Airport

Serviced Offices

- **Price** : £750 pcm
- **Min Price** : £750 pcm
- **Min Size** : 1 wkstns
- **Max Size** : 45 wkstns
- **Total Size** : 365 wkstns
- **Min Term** : 1 mnths
- **Max Term** : 12 mnths