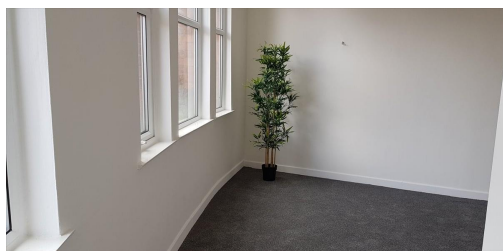


Serviced Office Space UK

187-189 Chapel Street

Manchester M3 5EQ



The space is near all the amenities and transport links expected from a central Manchester location, including lots of cafes and various shops, restaurants, and bars. Salford Central railway station is next door to the building, and from here, there are regular services to Manchester, Leeds and Wigan. Manchester Airport is within half an hour's drive and can be reached by public transport in under an hour. Manchester City Centre has some of the best shopping and dining options in the country.

This workspace is perfect for small businesses who wish to be in a location with proximity to Manchester City Centre. Situated on a prominent junction on the corner of New Bailey and Chapel Street, The building is bursting with character, with large floor to ceiling height & windows and original features. A unique part of this property is that each office suite has its dedicated bathroom, including a shower, perfect for those cycling to work or running during a lunch hour. In addition, there is a cleaning team on-site, keeping the space immaculate. The property can be accessed 24-hours a day, and the office suites are unfurnished.

transport links

Underground	N/A
Train Station	Manchester Piccadilly
Road Link	N/A
Airport	Manchester Airport

Serviced Offices

- **Price** : Â£250 pcm
- **Min Price** : Â£250 pcm
- **Min Size** : 3 wkstns
- **Max Size** : 5 wkstns
- **Total Size** : 62 wkstns
- **Min Term** : 1 mnths
- **Max Term** : 12 mnths