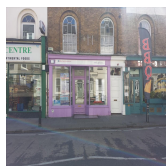
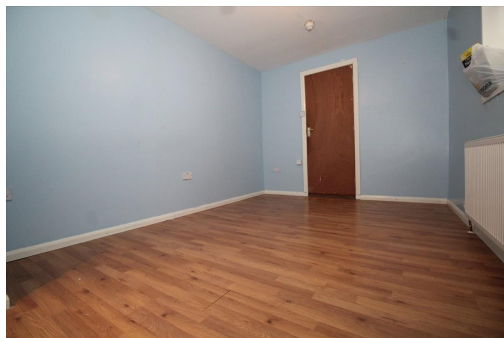


Serviced Office Space UK

High Street

Herne Bay CT6 5LH



The space is situated just 10-minutes walk from Herne Bay train station and bus station. The train station has direct services to London Victoria and London St Pancras International. The centre is also very close to all other high street retail shops, banks, and close to the beach. Canterbury is only a 15-minute drive. There are also many free car parking spaces always available for staff and visitors. Explore the lovely sea front area of the town, and take a walk down to the beach on a summer's lunchtime.

This workspace offers you your own private desk, drawer and filing cabinet and would suit starter business, medium size or freelancers. The centre is equipped with a meeting room, shared kitchen, 24-hour access, fully furnished and on flexible terms. There are also a number of free off-site car parking spaces, great for commuters and visitors arriving for meetings. IT support is offered, as well as WiFi, and telecoms. The open plan office suites make for a bright and airy feel, creating a comfortable working environment. This space is suitable for a range of business types, and is great for anyone requiring space in this area.

transport links

Underground	N/A
Train Station	Herne Bay
Road Link	N/A
Airport	Ashford Airport Cars

Virtual Office

- **Price** : £25 pcm
- **Min Price** : £25 pcm