

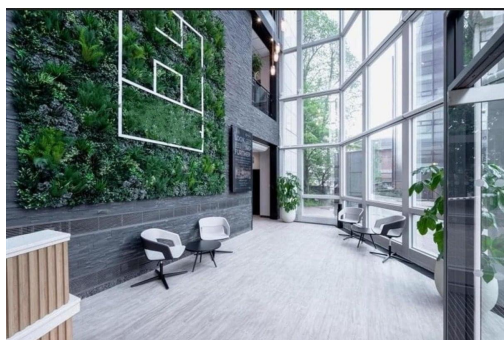
# Serviced Office Space UK

## Manor House Drive

### Coventry CV1 2TE



This centre is the ideal setting for those professionals commuting from even the furthest reaches of the wider region. This centre is conveniently located and boasts excellent transport links. The space is across the road from Coventry train station, making it a perfect choice for any business. The mainline train station is a two-minute walk away, accessed via tree-lined boulevards and landscaped gardens. Many restaurants, cafes, shopping centres, and other local amenities are close to this centre.



Recently refurbished to adapt to meet the demands of modern workspaces, offering flexible terms inclusive of everything businesses need to flourish. This workspace has market-leading flexible private offices, dedicated co-working areas designed to encourage collaboration, virtual office packages, and state-of-the-art meeting rooms equipped with technology that makes presenting simple. The refined design and stunning landmark architecture are locally renowned as a commercially significant business establishment incorporating a neutral palette, international style, and industrial materials to create an elegant and fun workspace.



### transport links

Underground	N/A
Train Station	Coventry
Road Link	N/A
Airport	Coventry Airport

### Virtual Office

- **Price** : Â£40 pcm
- **Min Price** : Â£40 pcm
- **Min Term** : 1 mnths
- **Max Term** : 36 mnths