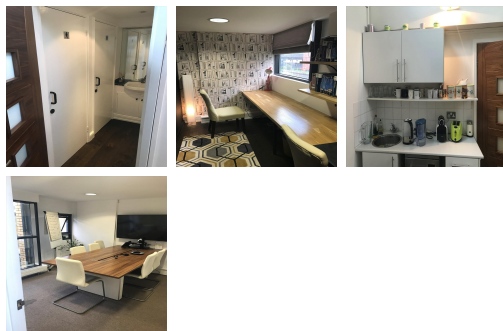


Serviced Office Space UK

London W10 6RA



Built in the late 1980s as part of a courtyard office development. Local buses run through the street frequently, and the nearest tube station being Latimer Road is only a 10-minute walk away, so the space is well connected by public transport. There are also local cafes around the centre for you to grab a coffee and a cake and Westfield Shopping Centre is only a 13-minute ride away on the tube, perfect for some retail therapy. Central London is easily accessible with various attractions and landmarks for you to explore.

This modern, bright, airy centre located in the heart of London is the perfect place for a business to get comfortable and grow professionally. This space offers meeting and board room facilities so hosting a business meeting or small event couldn't be easier. The first floor being the area available to let, access is gained from the main staircase. The offices provide bright and attractive studio space. The space comes furnished and hot desking is available, there is also a kitchen and lounge area for you to break out in. There are local bus services and convenience shopping in North Pole Road at the north end of Latimer Road. The area has proved popular with many media, music and creative companies, local occupiers include Cath Kidston, Stella McCartney and Monsoon.

transport links

Underground	Latimer Road London Underground Station
Train Station	Victoria Station
Road Link	N/A
Airport	Heathrow Airport

Sublet Office Spaces

- **Price** : Â£400 pcm
- **Min Price** : Â£400 pcm
- **Total Size** : 7 wkstns
- **Min Term** : 1 mnths
- **Max Term** : 8 mnths