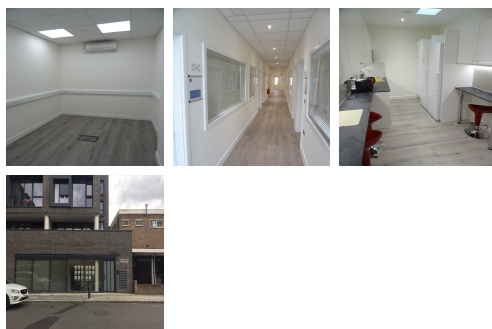


# Serviced Office Space UK

## 7 Havelock Place

Harrow HA1 1LJ



Conveniently located in the centre of Harrow, all amenities are within walking distance from the centre. There are local shops, banks, restaurants, cafes and bars near the centre. The workspace is situated in the heart of Harrow, placing tenants and their teams in a well-connected and easily accessible location. This centre is conveniently located and boasts excellent transport links. The nearest tube station is Harrow-on-the-hill and is a 6-minute walk away. London Heathrow is only a short drive away from this centre.

This centre is a great space that has been designed to meet the demands of any modern business. This modern workspace is located in the centre of Harrow, and it has everything clients need for their business. The centre is accessible 24 hours a day so the clients can work flexibly. There are lounges and breakout areas where tenants can take a break during a hectic workday. This business centre provides furnished offices with high-speed internet, parking space, meeting rooms, professional-grade daily cleaning, copy and printing facilities, kitchen facilities and beverages. This building is a wonderland for all things digital – providing an ever-expanding hub of creatives with never-ending networking opportunities.

### transport links

<b>Underground</b>	Harrow-on-the-Hill Station
<b>Train Station</b>	Harrow-on-the-Hill
<b>Road Link</b>	N/A
<b>Airport</b>	Heathrow Airport

### Serviced Offices

- **Price** : Â£300 pcm
- **Min Price** : Â£300 pcm
- **Min Size** : 2 wkstns
- **Max Size** : 30 wkstns
- **Total Size** : 91 wkstns
- **Min Term** : 6 mnths
- **Max Term** : 12 mnths