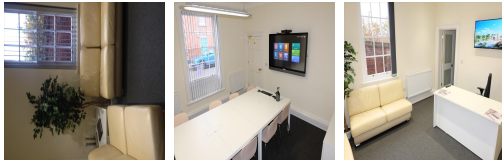


Serviced Office Space UK

Stourport-on-Severn DY13 9EH



Located in the town centre of Stourport-on-Severn, this excellent business space gives you access to lots amenities such as local shops, cafes, restaurants and bars where you can unwind or enjoy a casual business meeting. There is also a bank close by and a pharmacy. Local bus routes run through the town, so it is easy to catch a bus to travel onward, and the nearest train station which is Hartlebury is only an 8-minute drive away. From this station you can catch services to Worcester Foregate Street.

This centre located in the centre of Stourport on Severn gives you everything you need in order to start up or grow your current business. This office will give you 24-hour access, a full time shared receptionist, meeting rooms, private car parking, shared kitchen, toilets, showers. Each office is furnished with desk and telephones. The building is also very secure with a shared secure door entry system fitted with burglar alarm. Power, lighting, heating and cleaning are also included in the rent. As this space is located in the centre of Stourport on Severn you have local shops, cafes, restaurants and bars close by to enjoy. Local busses also travel through the location of the centre so onward travel is never a problem.

transport links

Underground	N/A
Train Station	Hartlebury
Road Link	N/A
Airport	Hagley Private Hire

Serviced Offices

- **Price** : Â£339 pcm
- **Min Price** : Â£339 pcm
- **Min Size** : 2 wkstns
- **Max Size** : 12 wkstns
- **Min Term** : 6 mnths