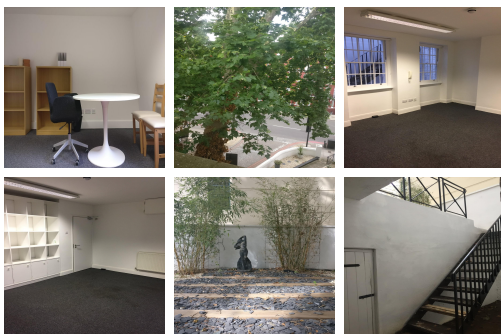
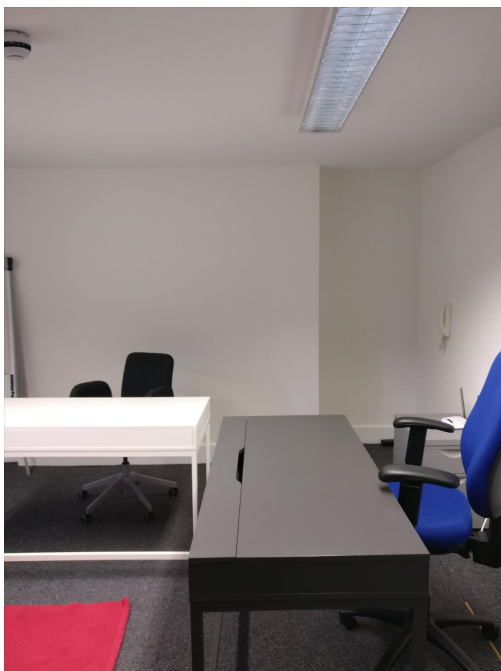


Serviced Office Space UK

207 Old Marylebone Road

London NW1 5QP



Situated in a prime location in London, surrounding the space are many facilities like eateries, where tenants can enjoy a lunch break or an evening of entertaining clients. Commuting to work is also easy. This centre is conveniently located and boasts excellent transport links as well. The surrounding area offers a wide range of eateries, and amenities like banks and retail shops, providing tenants with everything at their doorstep. The centre is accessible from almost every transport link, placing tenants and their teams in a well-connected and easily accessible location.

The refined design and stunning landmark architecture are locally renowned as a commercially significant business establishment incorporating a neutral palette, international style, and industrial materials to create an elegant and fun workspace. This stylish contemporary building has an entrance that makes a statement as the first impression for guests. Spacious, fully-furnished offices offer a team somewhere to work comfortably, where members can move in and get started straight away - no need for time wasted setting up various desks. This amenity-rich complex is the perfect location for any business seeking a modern workspace to thrive.

transport links

Underground	Edgware Road
Train Station	Euston Station
Road Link	N/A
Airport	London City Airport

Serviced Offices

- **Price** : Â£465 pcm
- **Min Price** : Â£465 pcm
- **Min Size** : 4 wkstns
- **Max Size** : 4 wkstns
- **Min Term** : 1 mnths
- **Max Term** : 12 mnths