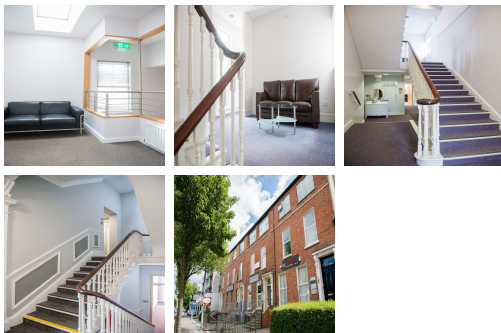


Serviced Office Space UK

180-186 Lisburn Road

Belfast BT9 6AL



Situated for the south side of Belfast, located less than 1 mile from Belfast city centre and with close access to the motor way, the property is ideally situated to avoid busy city centre traffic. Located on a prominent site on the main Lisburn Road, in Belfast's well-established premier suburban retail/professional office area. There are a number of professional businesses, independent fashion retailers, coffee shops and restaurants nearby.

This newly refurbished property has been finished to the highest standard and offers a choice of modern office suites. Across four floors the modern suites are decorated and can be furnished if required. Suites are available immediately and can be rented individually or as an entire floor. The property is situated in a prominent location, in Belfast's well established premier suburban retail / professional office area.

transport links

Underground	N/A
Train Station	Adelaide
Road Link	N/A
Airport	George Best Belfast City Airport

Serviced Offices

- **Min Size** : 1 wkstns
- **Max Size** : 100 wkstns
- **Total Size** : 100 wkstns