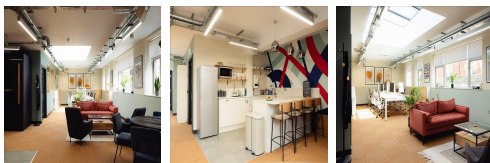
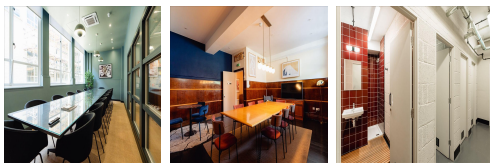
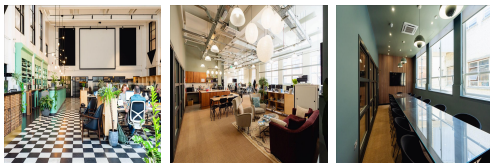
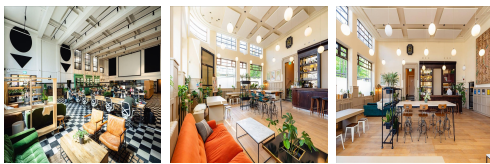
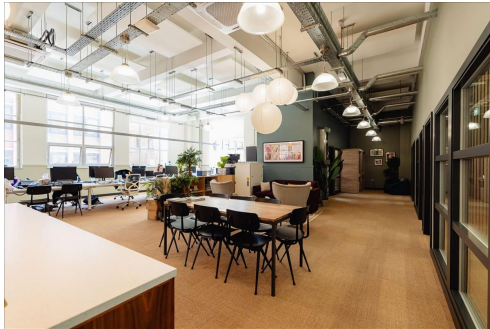


Serviced Office Space UK

Bournemouth BH1 1BZ



This centre is located in the heart of Bournemouth, placing tenants and their teams in a well-connected and easily accessible location. As Bournemouth's largest co-working and serviced office space, businesses are provided with various vibrant facilities. The building is just a short walk from Bournemouth Beach, making it a prime location for enjoying the sun and sea during lunch breaks or after work. For the members needing to travel to and from the office, Bournemouth Airport is easily accessible with transport options including buses and taxis readily available. The building's central location also offers plenty of hotel, restaurant, park, and bar options for members to enjoy.

This office space is for businesses believing in better working through the design. The building features 60,000 square feet of exceptionally designed private offices, co-working space, breakout areas, meeting rooms, phone booths, complimentary tea, coffee and biscuits. The building's refined interior design and stunning 1930s art deco architecture are locally renowned. This office houses a range of businesses from many 1-person startups to 80-person companies. The objective is to provide the members with the infrastructure and amenities needed to hit the ground running from the day members move into the office space.

transport links

Underground	N/A
Train Station	Bournemouth
Road Link	N/A
Airport	Bournemouth Airport

Coworking Spaces

- **Price** : Â£200 pcm
- **Min Price** : Â£200 pcm
- **Total Size** : 32 wkstns
- **Min Term** : 1 mnths
- **Max Term** : 12 mnths