

# Serviced Office Space UK

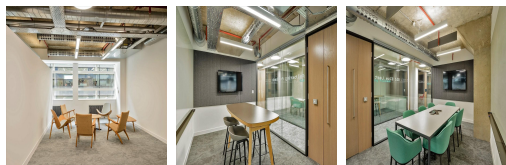
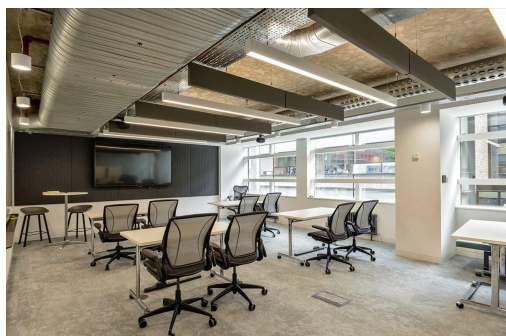
---

## London EC1V 9NR



The building is located adjacent to Old Street roundabout, and therefore has excellent connectivity to London's transport network. Old Street, Moorgate and Liverpool Street stations are all within a 10-minute walk. Crossrail from 2018 will further improve the link to the West End, Heathrow and eastwards towards Canary Wharf.

This centre is part of a new highly contemporary mixed use development, consisting of modern and inspiring office space, together with an eclectic and dynamic restaurant and retail offering. Completed in 2015 and designed by award winning architects AHMM, this destination space offers occupiers a new community where they can collaborate with purpose and integrity. The building boasts a double height main reception, together with a new Wi-Fi enabled coffee lounge on ground floor. The office accommodation provides Grade A space with an industrial creative aesthetic.



### transport links

|               |     |
|---------------|-----|
| Underground   | N/A |
| Train Station | N/A |
| Road Link     | N/A |
| Airport       | N/A |

### Serviced Offices

---

- **Min Size** : 40 wkstns
- **Max Size** : 80 wkstns