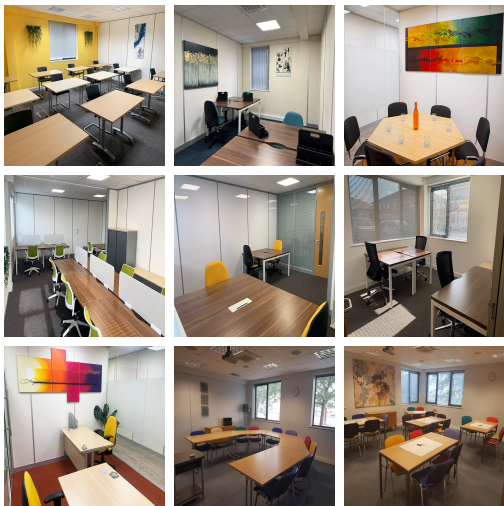


# Serviced Office Space UK

## Derby DE24 8JY



This centre is in Pride Park, Derby, a prestigious business park in the East Midlands. The business centre has excellent frontage onto Pride Parkway, Derby train station is just 0.6 miles from the office, and the closest bus stop is just over a five-minute walk away. There are excellent road links to the centre, A52 and M1. The centre is near for both those who commute via car and those who use public transport. The centre is accessible from almost every transport link, placing tenants and their teams in a well-connected and easily accessible location.

The centre provides high-quality, cost-effective and flexible support services to help businesses and organisations flourish and grow services like virtual PA services, professional conference suites, customised call answering, premium serviced offices and virtual offices. The centre consists of three buildings on St. Christopher's Way, No 15, 19 and 20. All three buildings have electric charging points and parking. There is a managed reception area, and the space comes fully furnished with kitchen facilities. This building is a wonderland for all things digital – providing an ever-expanding hub of creatives with never-ending networking opportunities.

### transport links

Underground	N/A
Train Station	Derby
Road Link	N/A
Airport	East Midlands Airport

### Virtual Office

- **Price** : £35 pcm
- **Min Price** : £35 pcm
- **Min Term** : 12 mnths
- **Max Term** : 60 mnths